

PKBC & PKBCW Series

Aluminum

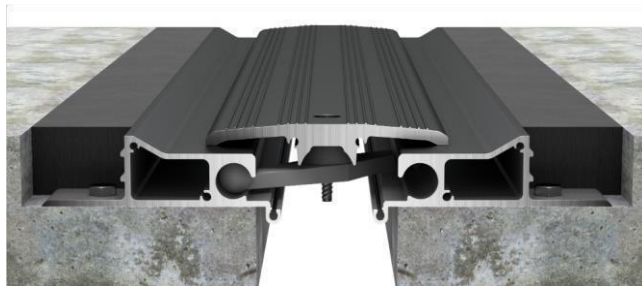
- Extrusion – PS uses multiple alloys & tempers which are established to be the most appropriate for the given use of individual parts are (6063-T5, T6, T52).
- Profiles can be customised in following alloys (6061-T5, T6, T51) (6105-T5, T6) (6005-T5) (6005A-T5, T61) as per ASTM B221

Vapor Barrier

- Material –EPDM (ethylene propylene diene monomer rubber)
- Color – Black

Turnbar

- Cast Aluminum – SR-319F
- Standard vehicular loading (3,000 lb. point load per IBC 2009)



MODEL	JOINT WIDTH	MINIMUM OPENING	MAXIMUM OPENING	EXPOSED SURFACE	BLOCKOUT WIDTH	BLOCKOUT HEIGHT
PKBC-400	102mm	51mm	165mm	281mm	165mm	51mm
PKBC-600	152mm	51mm	241mm	406mm	203mm	51mm
PKBCW-400	102mm	76mm	133mm	191mm	165mm	51mm
PKBCW-600	152mm	102mm	197mm	278mm	203mm	51mm

