

EXPANSION JOINTS COVER SYSTEMS

PTR & PTRW

TECHNICAL DATA:

Aluminum

- Extrusion – PS uses multiple alloys & tempers which are established to be the most appropriate for the given use of individual parts. Will be one of the following: (6063-T5, T6, T52)

Profiles can be customised as per following alloy grades: (6061-T5, T6, T51), (6105-T5, T6) (6005-T5) (6005A-T5, T61), as per ASTM Code B221

Primary Seal

- Dual Durometer 65 Shore A, 90 Shore A, ASTM D2240
- Available in Black Standard colour.

Turnbar

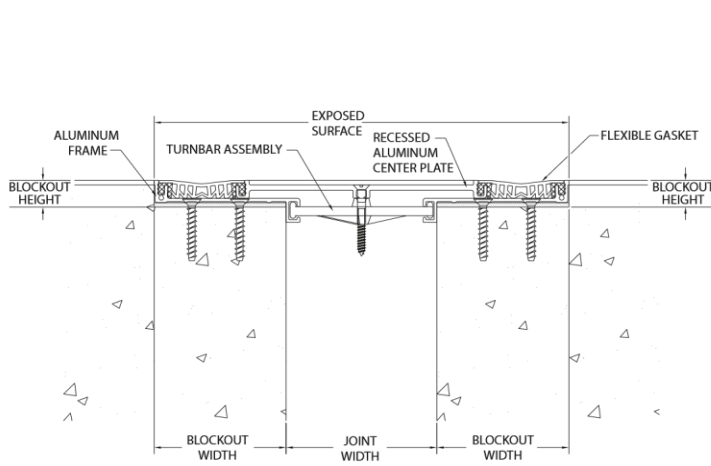
- Injection Molded, Glass-Reinforced Plastic

Standard Loading

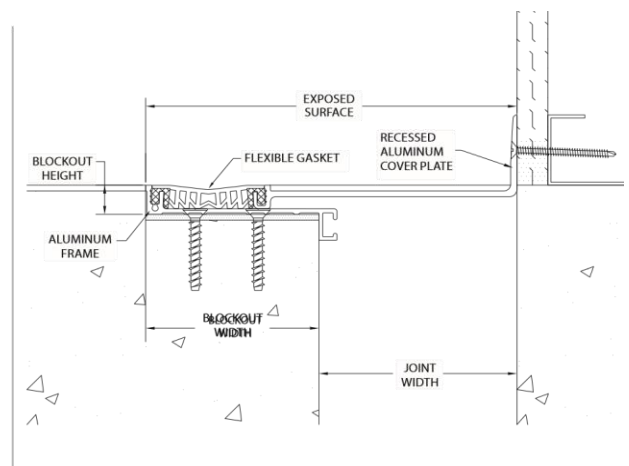
- 500 lbs



MODEL	JOINT WIDTH	MINIMUM OPENING	MAXIMUM OPENING	EXPOSED SURFACE	BLOCKOUT WIDTH	BLOCKOUT HEIGHT
PTR-200	51mm	32mm	95mm	165mm	57mm	16mm
PTR-400	102mm	32mm	159mm	279mm	89mm	16mm
PTRW-200	51mm	25mm	76mm	107mm	57mm	16mm
PTRW-400	102mm	64mm	140mm	188mm	88mm	16mm



PTR



PTRW