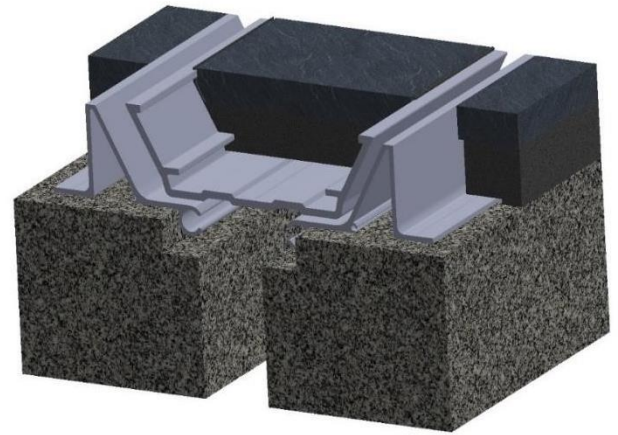


PSR & PSRW- 200/400 Series

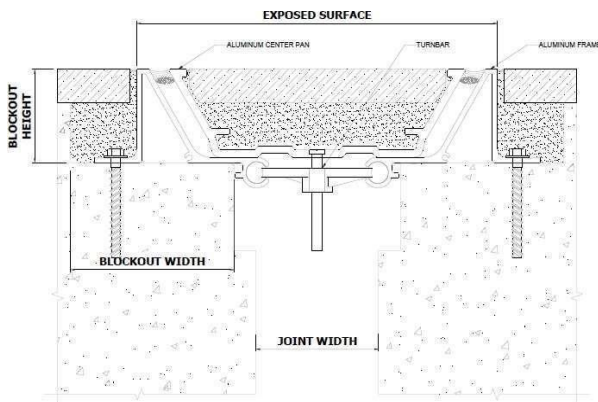
Technical Data:

Aluminum

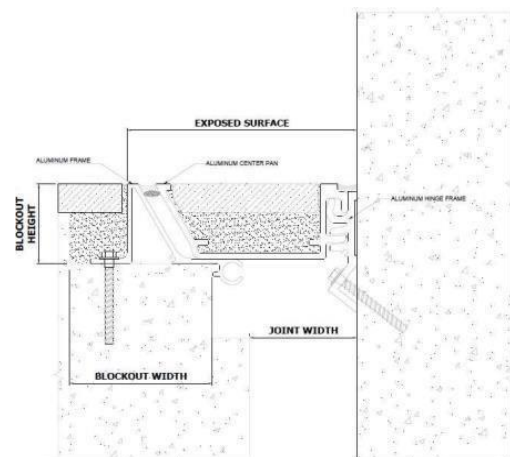
- Extrusion – PS uses multiple alloys & tempers which are established to be the most appropriate for the given use of individual parts are (6063-T5, T6, T52) as per ASTM B221.
- Profiles can be customised as per following alloys (6061-T5, T6, T51) (6105-T5, T6) (6005-T5) (6005A-T5, T61), as per ASTM B221
- Turnbar
Stainless Steel Turn Bar with nylon Balls



MODEL	JOINT WIDTH	MINIMUM OPENING	MAXIMUM OPENING	EXPOSED SURFACE	BLOCKOUT WIDTH	BLOCKOUT HEIGHT
PSR-200	51mm	38mm	100mm	221mm	126mm	56mm
PSR-400	102mm	38mm	150mm	221mm	100mm	56mm
PSRW-200	51mm	38mm	73mm	161mm	126mm	56mm
PSRW-400	102mm	38mm <td 123mm	161mm	100mm	56mm	



PSR



PSRW