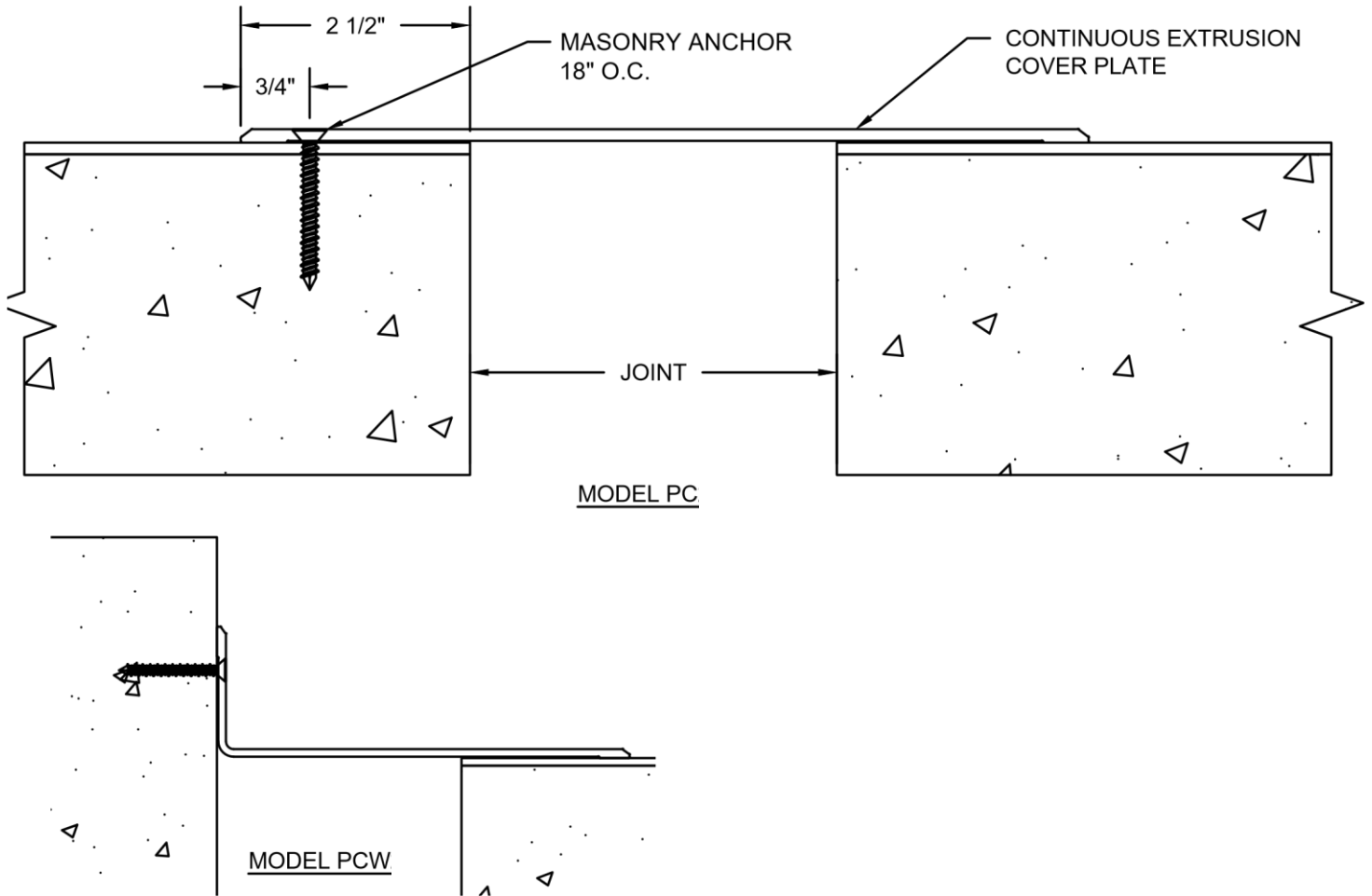


MODEL PC/PCW INSTALLATION INSTRUCTIONS



IMPORTANT INFORMATION

Prior to the commencement of Installation, all materials MUST be inspected for Damage. Any damage must be reported to PINNACLE SOLUTIONS., as soon as possible, so that replacement materials may be furnished without delay.

All work must be completed as per Architect's Approved "Shop Drawings", and in accordance with these Installation Instructions. When installation is complete, all materials must be protected from damage until the Architect's FINAL INSPECTION.

All materials should be arranged in the order that they are to be installed. All hardware required for each portion of the work should be placed with the appropriate materials.

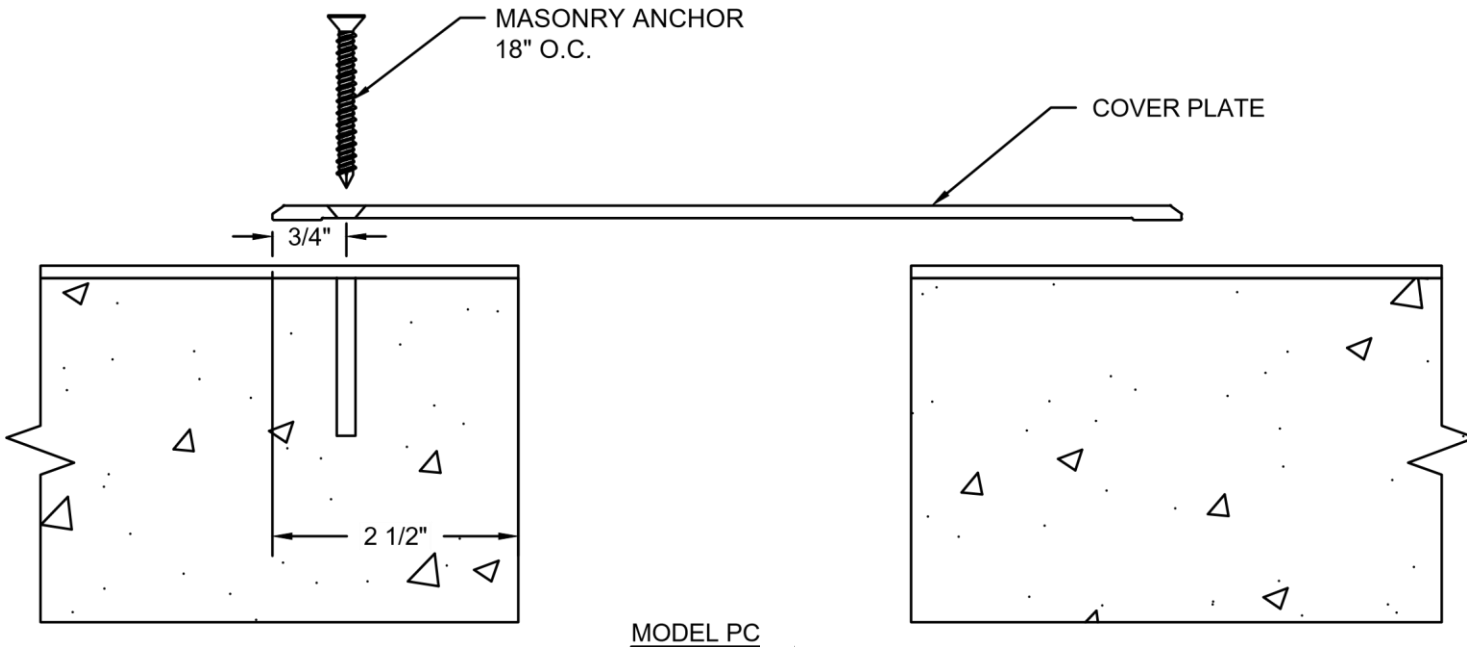
Please review all Approved Shop Drawings and this Document to familiarize yourself with all the details and components of this assembly.

IMPORTANT:

READ THROUGH ALL INSTRUCTIONS PRIOR TO STARTING INSTALLATION

STEP 1

FLOOR COVER PLATE INSTALLATION



Note:

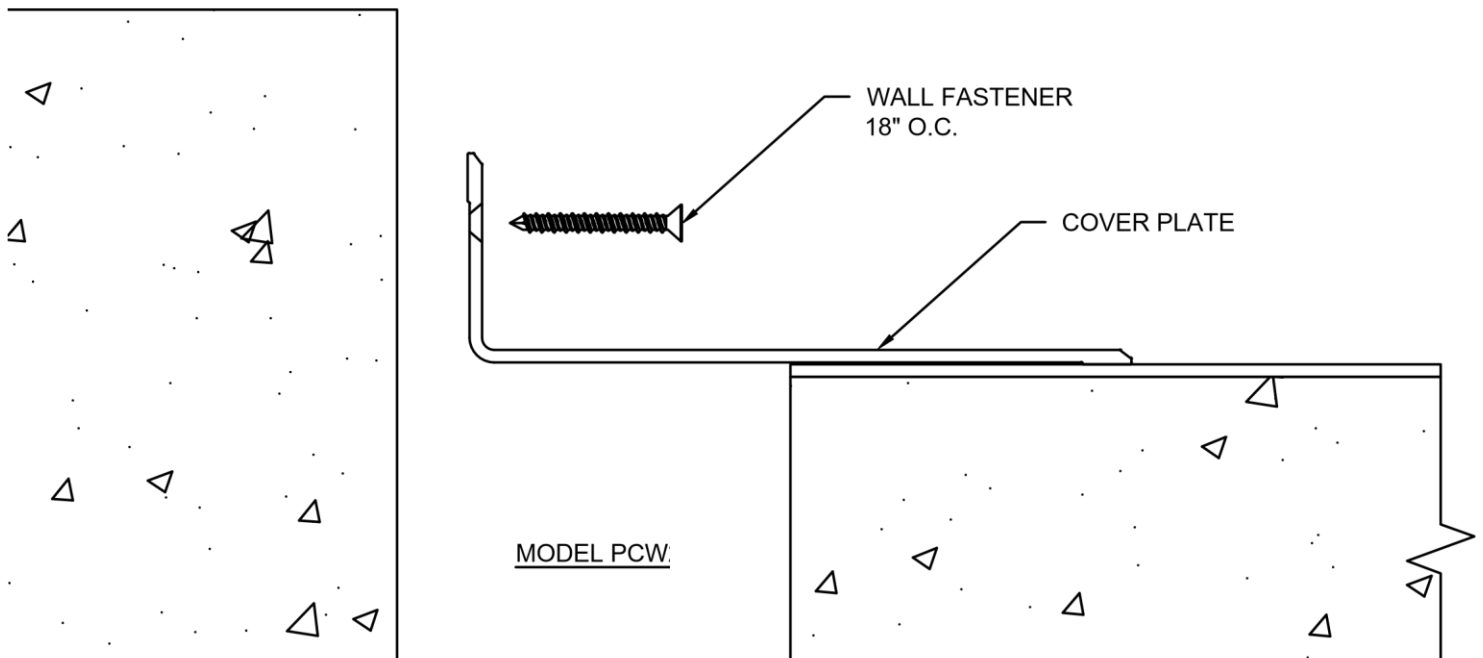
If a PS Fire Barrier is to be installed in the joint, please review the Fire Barrier Installation Instructions supplied, and if required install the Fire Barrier **BEFORE** installation of PS Seismic Expansion Joint Cover.

- If a Waterstop is to be installed in the joint, please review the Waterstop Installation Instructions supplied, and if required install the Waterstop **BEFORE** installation of PS Seismic Expansion Joint Cover.

- 1.1) Begin installation of Cover Plate by placing a length of the Cover Plate over the joint. Cut the Cover Plate to length as needed.
- 1.2) Locate edge of Cover Plate 2-1/2" from edge of slab (see detail above).
- 1.3) Using the Cover Plate as a template, mark the locations for the PS supplied anchor bolts.
- 1.4) Remove the Cover Plate and drill holes for the anchor bolts. The holes are to be drilled with the appropriate size and type of drill bit as indicated by the manufacturer of the anchor bolts, as supplied by PS.
- 1.5) Reposition and anchor the Cover Plate to the slab with the PS supplied anchor bolts following the manufacturer's guidelines.
- 1.6) Repeat the installation procedures for any additional lengths of Cover Plate.

STEP 2

FLOOR TO WALL COVER PLATE INSTALLATION



Note:

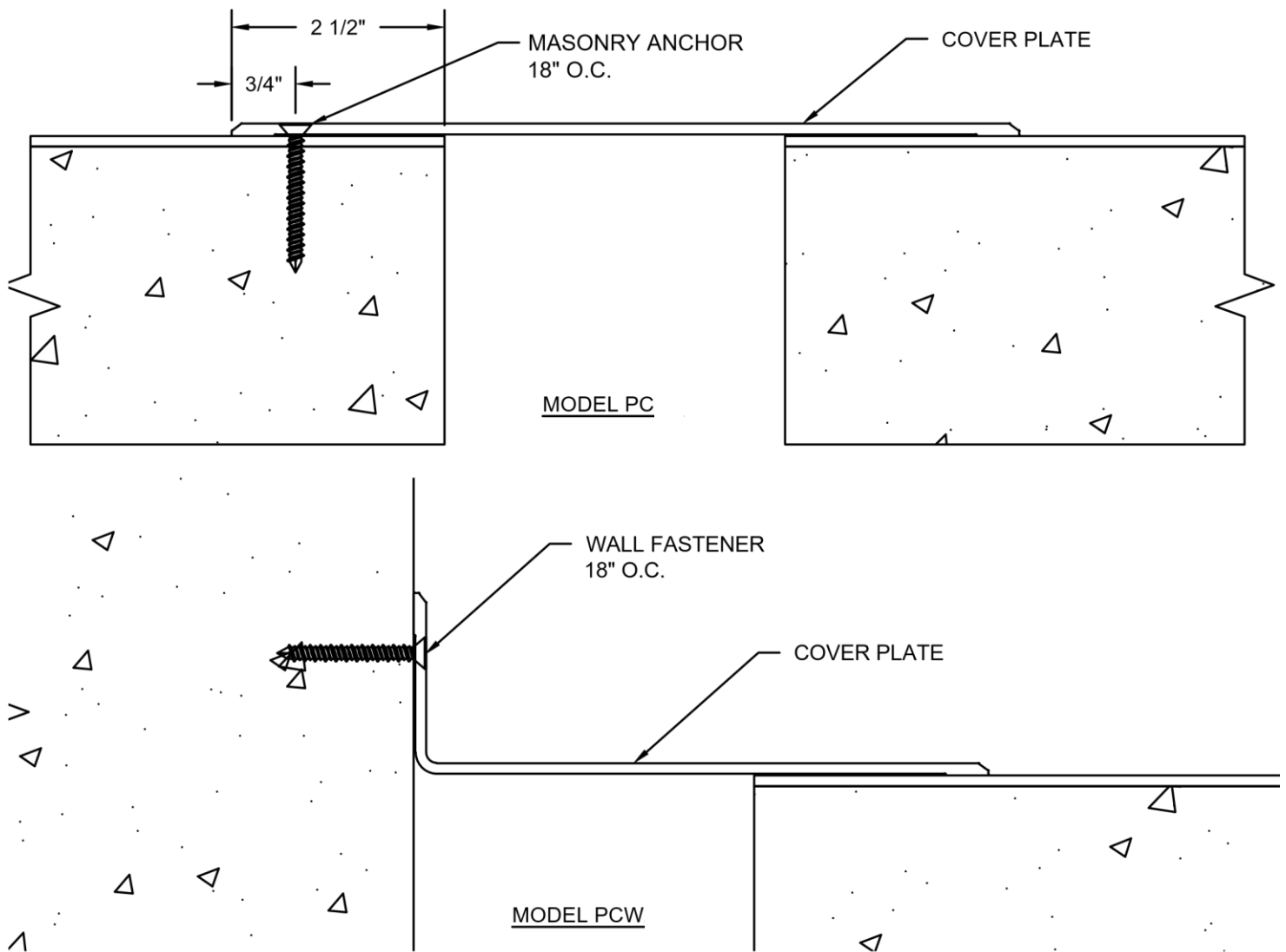
If a PS Fire Barrier is to be installed in the joint, please review the Fire Barrier Installation Instructions supplied, and if required install the Fire Barrier **BEFORE** installation of PS Seismic Expansion Joint Cover.

- If a Waterstop is to be installed in the joint, please review the Waterstop Installation Instructions supplied, and if required install the Waterstop **BEFORE** installation of PS Seismic Expansion Joint Cover.

- 2.1) Begin installation of Cover Plate by centering a length of Cover Plate over joint and cutting to length as needed.
- 2.2) Using the Cover Plate as a template, mark the locations for the PS supplied anchor bolts.
- 2.3) If needed, remove Cover Plate and drill holes for the anchor bolts. The holes are to be drilled with the appropriate size and type of drill bit as indicated by the manufacturer of the anchor bolts, as supplied by PS.
- 2.4) Reposition and anchor the Cover Plate to the wall with the PS supplied wall fasteners following the manufacturer's guidelines.
- 2.5) Repeat the installation procedures for any additional lengths of Cover Plate.

STEP 3

COMPLETE INSTALLATION



- 3.1) When installation of the PS Floor Expansion Joint Cover has been completed, remove all residue and foreign matter from the area and joint cover.
- 3.2) Clean the PS Joint Cover and adjoining surfaces with proper cleaner.
- 3.3) Protect the Joint Cover until the Architect's final inspection.