

EXPANSION JOINTS COVER SYSTEMS

PCJ & PCJC Series

Technical Data:

Aluminum

- Extrusion – P/S uses multiple alloys & tempers which are established to be the most appropriate for the given use of individual parts are (6063-T5, T6, T52).

Profiles can be customised as per following alloys (6061-T5, T6, T51) (6105-T5, T6) (6005-T5) (6005A-T5, T61), as per ASTM B221

- Sheet – 6061-T6, 3003-H14, 5005-H34, ASTM B209

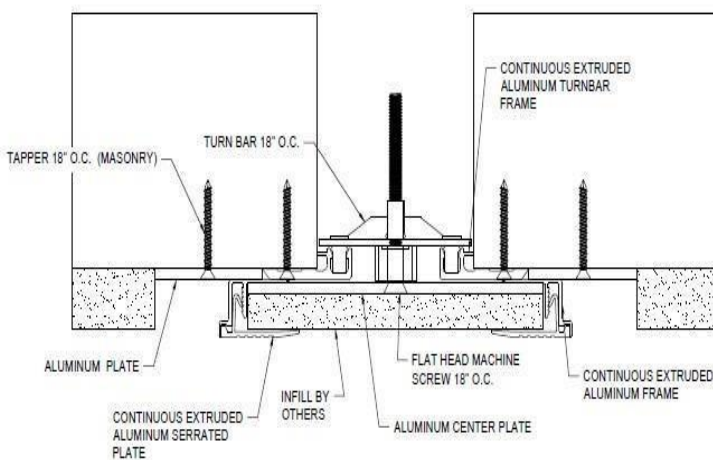
Turnbar

- Material – Stainless Steel Turn Bar

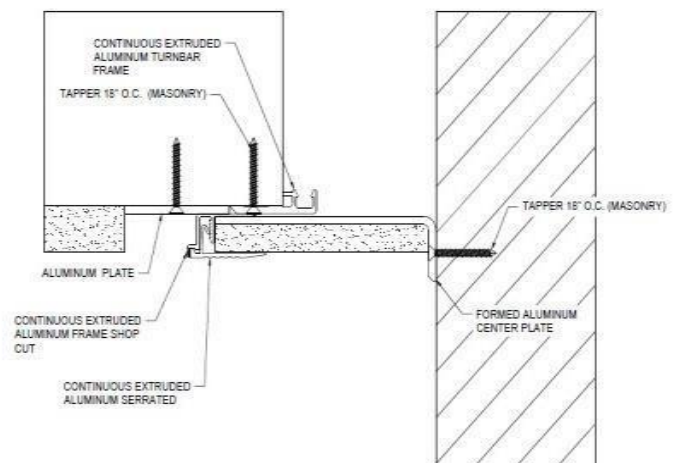
Standard Finishes: Mill finish



| MODEL | JOINT WIDTH | MINIMUM OPENING | MAXIMUM OPENING | EXPOSED SURFACE | BLOCKOUT WIDTH | BLOCKOUT HEIGHT |
|----------|-------------|-----------------|-----------------|-----------------|----------------|-----------------|
| PCJ-300 | 76mm | 68mm | 150mm | 283mm | 105mm | 43mm |
| PCJC-300 | 76mm | 19mm | 164mm | 179mm | 105mm | 43mm |
| PCJ-400 | 102mm | 68mm | 150mm | 283mm | 92mm | 27mm |
| PCJC-400 | 102mm | 19mm | 164mm | 191mm | 92mm | 27mm |



PCJ



PCJC