

# EXPANSION JOINTS COVER SYSTEMS

## PFW & PFWC

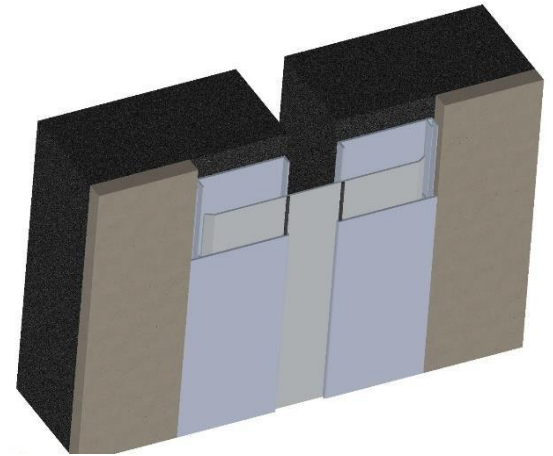
### Technical Data:

#### Aluminium

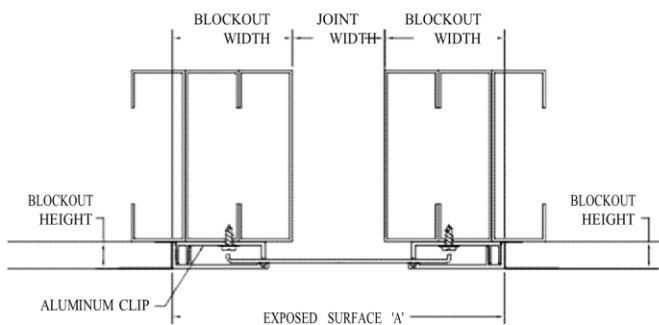
- Extrusion – PS uses multiple alloys & tempers which are established to be the most appropriate for the given use of individual parts are (6063-T5, T6, T52)
- The profiles can be customised as per following alloys (6061-T5, T6, T51) (6105-T5, T6), (6005-T5), (6005A-T5, T61), as per ASTM code B221
- Sheet – 19000 M, 19000 H2, 31000 H2, 31000 H3, 1100/1200.

#### Duroflex Gasket

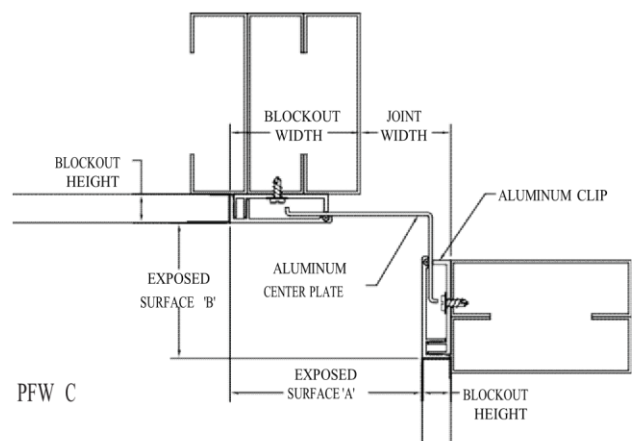
- Single Durometer – 65 Shore A, ASTM D2000
- Colour Gasket- Black



MODEL	JOINT WIDTH	MINIMUM OPENING	MAXIMUM OPENING	SURFACE EXPOSED "A"	SURFACE EXPOSED "B"	BLOCKOUT WIDTH	BLOCKOUT HEIGHT
PFW-200	51mm	10mm	89mm	197mm	N/A	73mm	16mm
PFW-400	102mm	25mm	187mm	298mm	N/A	99mm	16mm
PFW-600	152mm	83mm	229mm	349mm	N/A	99mm	16mm
PFW-800	203mm	102mm	305mm	457mm	N/A	127mm	16mm
PFWC-200	51mm	30mm	70mm	108mm	76mm	73mm	16mm
PFWC-400	102mm	64mm	145mm	181mm	131mm	99mm	16mm
PFWC-600	152mm	118mm	191mm	235mm	133mm	99mm	16mm
PFWC-800	203mm	152mm	254mm	315mm	133mm	127mm	16mm



PFW



PFW C