

EXPANSION JOINTS COVER SYSTEMS

Aluminum

- Extrusion – PS uses multiple alloys & tempers which are established to be the most appropriate for the given use of individual parts. Will be one of the following: (6063-T5, T6, T52)

Profiles can be customised as per following alloy grades: (6061-T5, T6, T51), (6105-T5, T6) (6005-T5) (6005A-T5, T61), as per ASTM Code B221

Primary Seal

- Dual Durometer 65 Shore A, 90 Shore A, ASTM D2240
- Available in Standard Black colour.

Premium Color

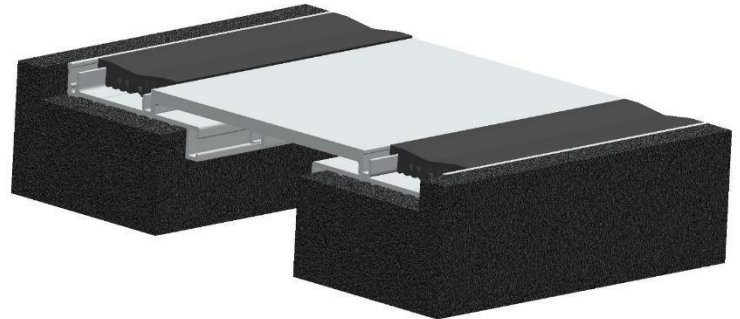
- Silver- Anodised Finish.

Turnbar

- Injection Molded, Glass-Reinforced Plastic

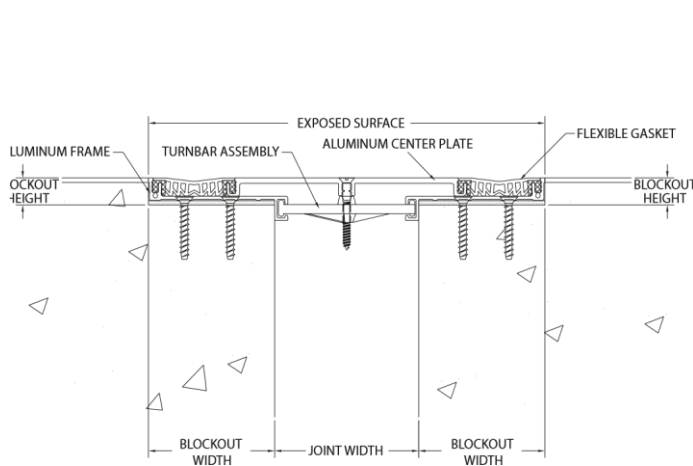
Standard Loading

- 500 lbs.

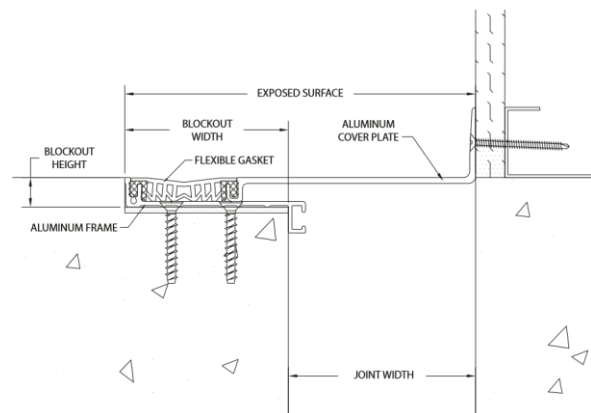


Capable of Lateral Movement

MODEL	JOINT WIDTH	MINIMUM OPENING	MAXIMUM OPENING	EXPOSED SURFACE	BLOCKOUT WIDTH	BLOCKOUT HEIGHT
PTP -200	51mm	32mm	95mm	162mm	57mm	16mm
PTP-400	102mm	32mm	159mm	279mm	89mm	16mm
PTPW-200	51mm	25mm	76mm	107mm	57mm	16mm
PTPW-400	102mm	64mm	140mm	191mm	89mm	16mm



PTP



PTPW