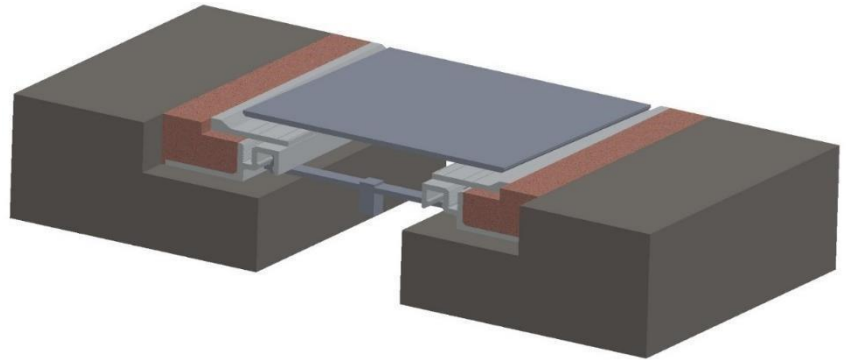


PJPF & PJPFW

Technical Data:

Aluminum

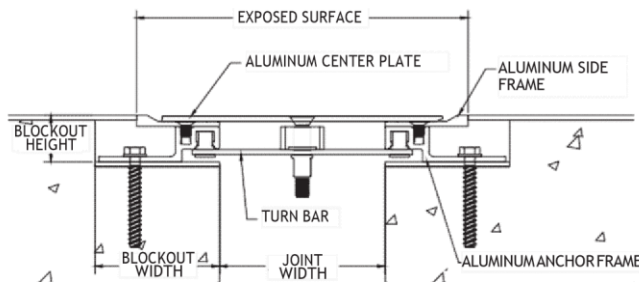
- Extrusion – PS uses multiple alloys & tempers which are established to be the most appropriate for the given use of individual parts. Will be one of the following: (6063-T5, T6, T52) (6061-T5, T6, T51), (6105-T5, T6) (6005-T5) (6005A-T5, T61), ASTM B221
- Sheet – 19000 M, 19000 H2, 31000 H2, 31000 H3, 1100/1200
- Turnbar: 304 Stainless Steel, as per ASTM Code A167
- Finish - “A” Coating (Corrosion Protection)
- Standard Loading
500 lbs.



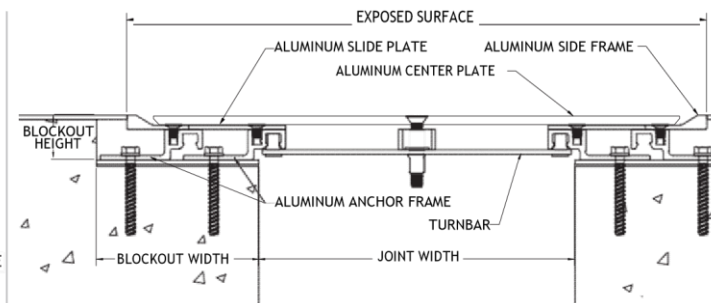
Capable of Lateral Movement

MODEL	JOINT WIDTH	MINIMUM OPENING	MAXIMUM OPENING	EXPOSED SURFACE	BLOCKOUT WIDTH	BLOCKOUT HEIGHT
PJPF-200	51mm	25mm	89mm	102mm	57mm	42mm
PJPF-400	102mm	25mm	165mm	203mm	76mm	29mm
PJPF-600	152mm	25mm	251mm	293mm	76mm	29mm
PJPF-800	203mm	27mm	298mm	370mm	75mm	29mm
PJPF-1000	254mm	64mm	381mm	445mm	117mm	33mm
PJPF-1200	305mm	64mm	425mm	509mm	124mm	33mm
PJPF-1400	356mm	64mm	527mm	585mm	137mm	33mm
PJPF-1600	406mm	64mm	603mm	662mm	150mm	33mm

Contact factory for larger sizes.



PJPF 100-800

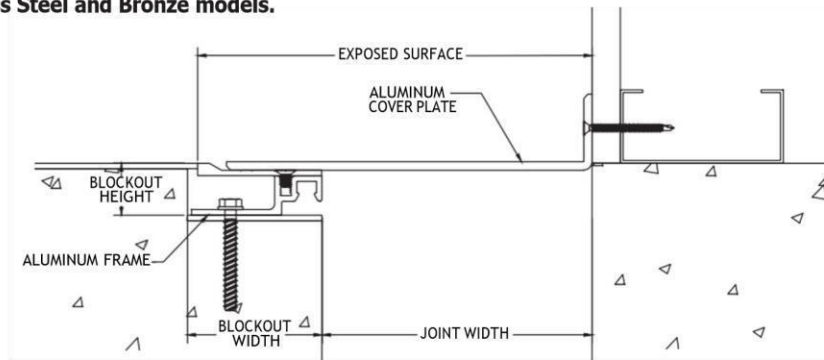


PJPF 900-1600

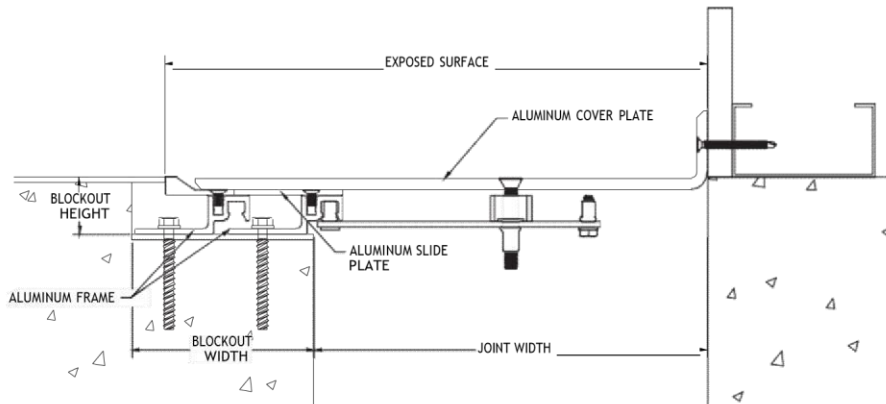
EXPANSION JOINTS COVER SYSTEMS

MODEL	JOINT WIDTH	MINIMUM OPENING	MAXIMUM OPENING	EXPOSED SURFACE	BLOCKOUT WIDTH	BLOCKOUT HEIGHT
PJPFW-200	51mm	0mm	76mm	77mm	57mm	42mm
PJPFW-400	102mm	0mm	133mm	152mm	76mm	29mm
PJPFW-600	150mm	0mm	202mm	223mm	76mm	29mm
PJPFW-800	200mm	114mm	254mm	297mm	75mm	29mm
PJPFW-1000	250mm	159mm	318mm	350mm	117mm	33mm
PJPFW-1200	300mm	184mm	381mm	407mm	124mm	33mm
PJPFW-1400	350mm	210mm	488mm	470mm	137mm	33mm
PJPFW-1600	400mm	236mm	527mm	534mm	150mm	33mm

Contact factory for larger sizes.
Use chart above for Stainless Steel and Bronze models.



PJPFW 100-600



PJPFW 700-1600