

PC & PCW

FLOOR TO FLOOR

TECHNICAL DATA:

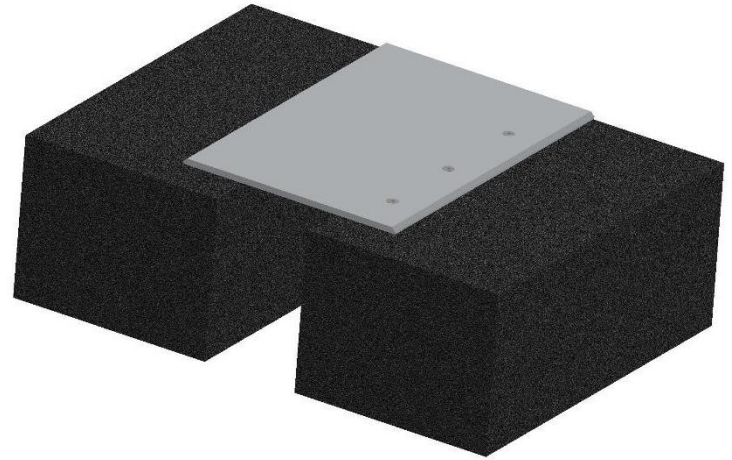
Aluminum

- Sheet – 6063-T6, 3003-H14, 5005-H34, as per ASTM Code B209

Stainless Steel

- Type 304 Grade
- **Standard Loading**
500 lbs.

Custom based on Project Requirements

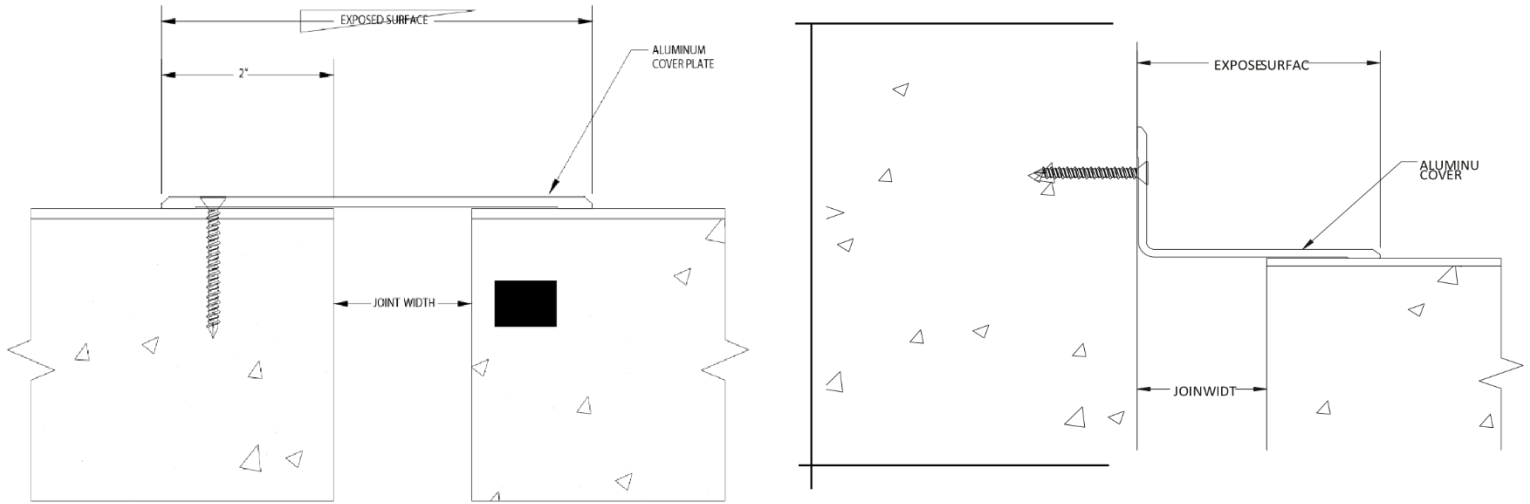


Capable of Lateral Movement

MODEL	JOINT WIDTH	MINIMUM OPENING	MAXIMUM OPENING	EXPOSED SURFACE	BLOCKOUT WIDTH	BLOCKOUT HEIGHT
PC-100	25 mm	10mm	89mm	159mm	N/A	N/A
PC-200	51mm	10mm	89mm	159mm	N/A	N/A
PC-400	102mm	10mm	165mm	235mm	N/A	N/A
PC-600	152mm	10mm	241mm	311mm	N/A	N/A
PC-800	203mm	10mm	318mm	387mm	N/A	N/A
PC-1000	254mm	10mm	394mm	464mm	N/A	N/A
PC-1200	305mm	10mm	470mm	540mm	N/A	N/A
PC-1400	356mm	10mm	546mm	616mm	N/A	N/A
PC-1600	406mm	10mm	622mm	692mm	N/A	N/A

NOTE : PC Plate Width & Thickness are Customizable as per Customers Requirements.

EXPANSION JOINTS COVER SYSTEMS



MODEL	JOINT WIDTH	MINIMUM OPENING	MAXIMUM OPENING	EXPOSED SURFACE	BLOCKOUT WIDTH	BLOCKOUT HEIGHT
PCW-100	26 mm	10mm	89mm	95mm	N/A	N/A
PCW-200	51mm	10mm	89mm	95mm	N/A	N/A
PCW-400	102mm	10mm	165mm	171mm	N/A	N/A
PCW-600	152mm	10mm	241mm	248mm	N/A	N/A
PCW-800	203mm	10mm	318mm	324mm	N/A	N/A
PCW-1000	254mm	10mm	394mm	400mm	N/A	N/A
PCW-1200	305mm	10mm	470mm	476mm	N/A	N/A
PCW-1400	356mm	10mm	546mm	552mm	N/A	N/A
PCW-1600	406mm	10mm	622mm	629mm	N/A	N/A

NOTE : PC Plate Width & Thickness are Customizable as per Customers Requirements.