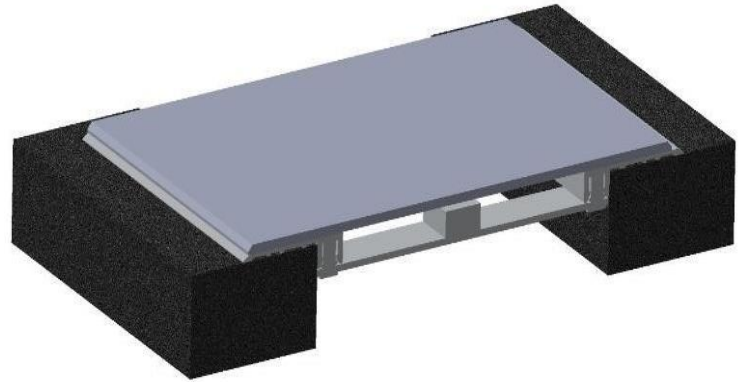


## PFBI & PFBIW

### Technical Data:

#### Aluminum

- Extrusion – PS uses multiple alloys & tempers which are established to be the most appropriate for the given use of individual parts are (6063-T5, T6, T52) as per ASTM B221.
- Profiles can be customised as per following alloys (6061-T5, T6, T51) (6105- T5, T6) (6005-T5) (6005A-T5, T61), as per ASTM B221.
- Sheet – 6061-T6, 3003-H14, 5005-H34, as per ASTM B209



#### Turnbar-

- Material- Steel Turn Bar  
Finish- “A” Coating (Corrosion Protection)

MODEL	JOINT WIDTH	MINIMUM OPENING	MAXIMUM OPENING	EXPOSED SURFACE	BLOCKOUT WIDTH	BLOCKOUT HEIGHT
PFBI-200	50mm	25mm	76mm	168mm	N/A	N/A
PFBI-400	102mm	59mm	211mm	203mm	N/A	N/A
PFBI-600	152mm	59mm	262mm	254mm	N/A	N/A
PFBI 800	203mm	59mm	313mm	302mm	N/A	N/A
PFBIW-200	50mm	18mm	76mm	100mm	N/A	N/A
PFBIW-400	102mm	18mm	157mm	152mm	N/A	N/A
PFBIW-600	152mm	18mm	207mm	194mm	N/A	N/A
PFBIW-800	203mm	18mm	258mm	244mm	N/A	N/A

