

EXPANSION JOINTS COVER SYSTEMS

PPF & PPFW

Technical Data:

Aluminum

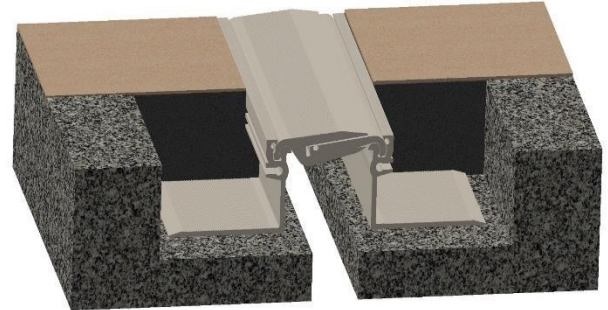
- PS uses multiple alloys & tempers which are established to be the most appropriate for the given use of individual parts.
- Extrusion - 6063-T5, T6, T52
Profiles Can be customised as per following alloy grades: 6061-T5, T6, T51, 6105-T5, T6, 6005-T5, 6005A-T5, T61, ASTM B221

Loading

- Forklifts with full or pneumatic tires of a permissible total weight equal to 16,000 lbs.
- Trucks with pneumatic tires of a permissible total weight equal to 67,000 lbs.
- Vehicles and goods handling trucks with tires of hard plastics.
The permissible load dependent on tire width is 15 lbs. per every mm of a tire width.

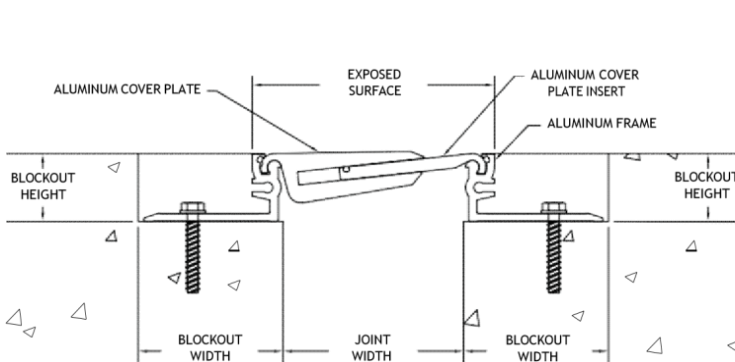
Frame Heights

- 1/2" - 1" for 1" models
- 1 1/2" - 2" for 2" - 4" model

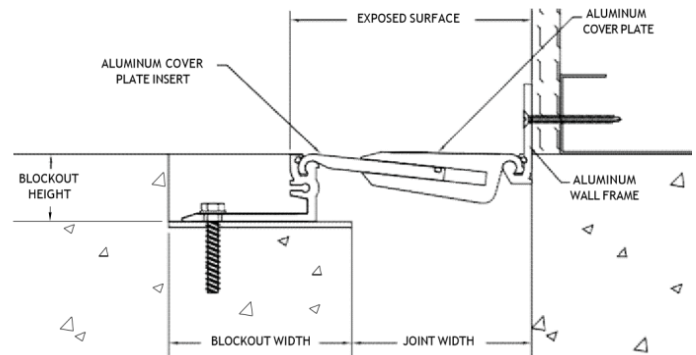


Capable of Lateral Movement

MODEL	JOINT WIDTH	MINIMUM OPENING	MAXIMUM OPENING	EXPOSED SURFACE	BLOCKOUT WIDTH	BLOCKOUT HEIGHT
PPF-100	25mm	19mm	32mm	43mm	64mm	26mm
PPF-200	51mm	41mm	60mm	83mm	76mm	50mm
PPF-400	102mm	76mm	125mm	128mm	84mm	30mm
PPF-400(HD)	102mm	76mm	125mm	128mm	97mm	38mm
PPFW-100	25mm	19mm	32mm	43mm	64mm	26mm
PPFW-200	51mm	41mm	60mm	83mm	92mm	50mm
PPFW-400	102mm	83mm	121mm	111mm	134mm	30mm
PPFW-400(HD)	102mm	83mm	121mm	114mm	109mm	38mm



PPF



PPFW