

PFI & PFIW

Technical Data:

Aluminium

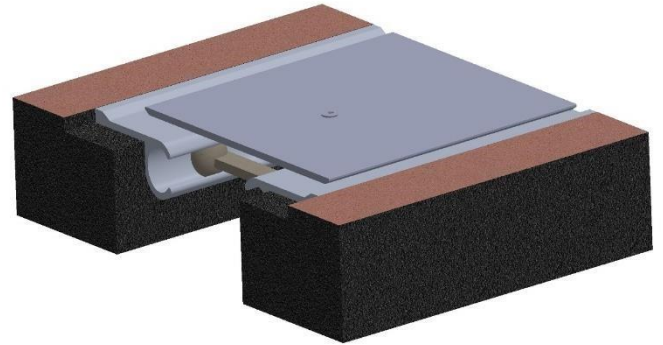
- Extrusion – PS uses multiple alloys & tempers which are established to be the most appropriate for the given use of individual part are (6063-T5, T6, T52) as per ASTM B221
- Profiles can be customised as per following alloys (6061-T5, T6, T51) (6105-T5, T6) (6005-T5) (6005A-T5, T61) as per ASTM B221
- Sheet – 19000 M, 19000 H2, 31000 H2, 31000 H3, 1100/1200

Turnbar:

- Material – Cast Iron Turn Bar

Standard Loading

- 500 lbs.

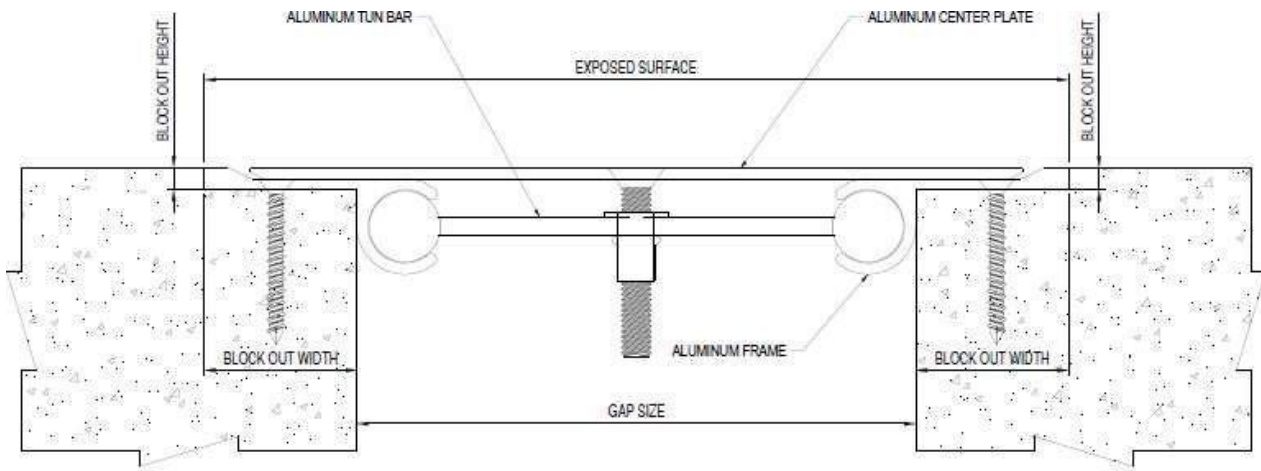


Capable of Lateral Movement

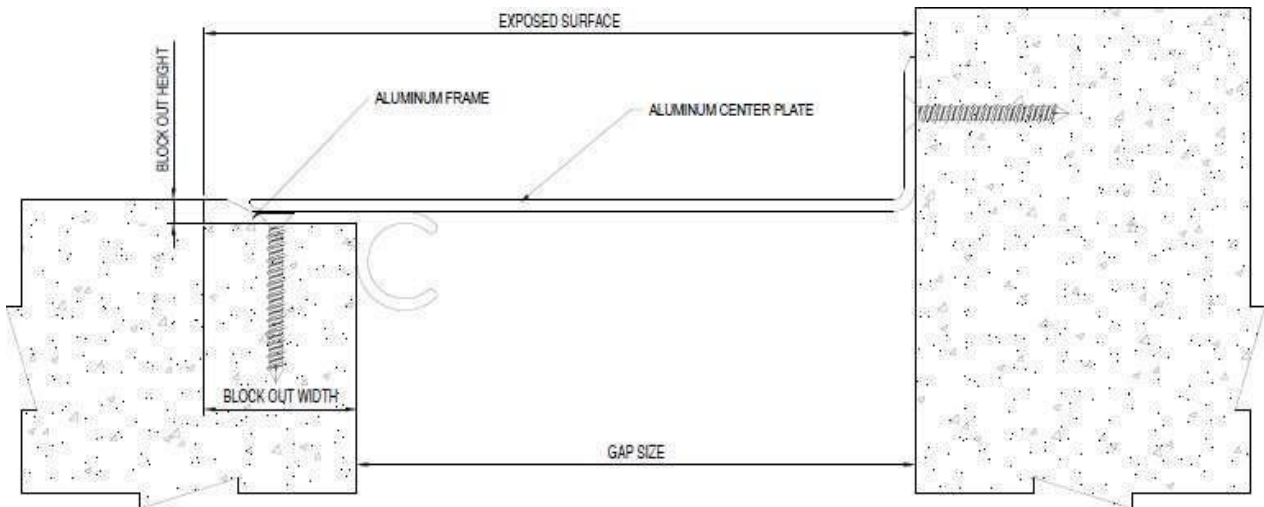
MODEL	JOINT WIDTH	MINIMUM OPENING	MAXIMUM OPENING	SURFACE EXPOSED
PFI-400	100mm	56mm	176mm	182mm
PFI-600	150mm	56mm	226mm	232mm
PFI-800	200mm	56mm	276mm	307mm
PFI-1000	250mm	56mm	326mm	357mm
PFIW-400	100mm	22mm	138mm	142mm
PFIW-600	150mm	22mm	188mm	191mm
PFIW-800	200mm	130mm	238mm	254mm
PFIW-1000	250mm	155mm	288mm	304mm

Contact factory for larger sizes.

EXPANSION JOINTS COVER SYSTEMS



PFI



PFIW