

# EXPANSION JOINTS COVER SYSTEMS

## PPDA & PPDAW

### Technical Data:

#### Aluminium

- Extrusion – PS uses multiple alloys & tempers which are established to be the most appropriate for the given use of individual parts. Will be one of the following: (6063-T5, T6, T52) ASTM B221

#### Primary Seal

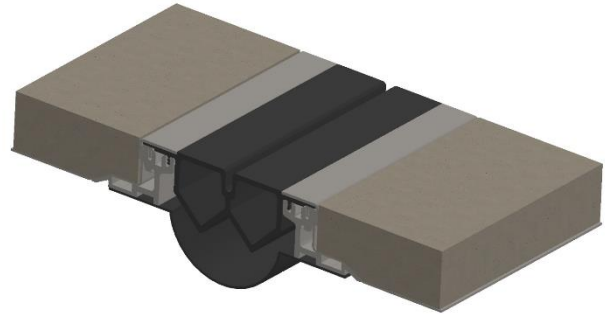
- Single Durometer - 78 Shore A
- Available in Black

#### Standard Loading

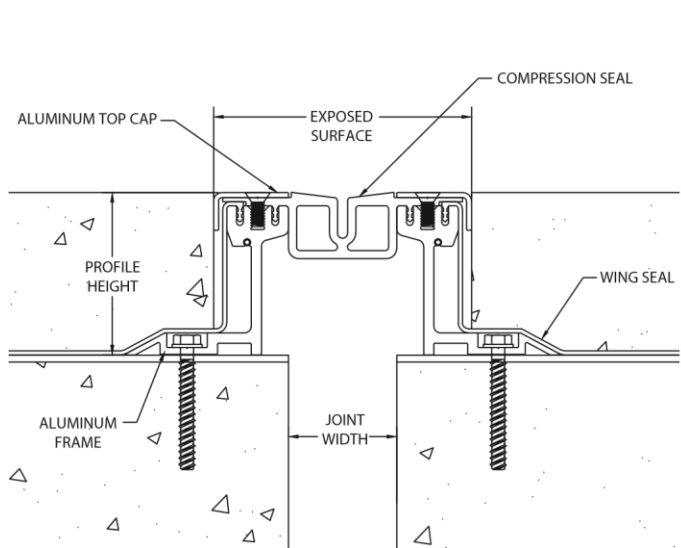
- 500 lbs.

#### Wing Seal

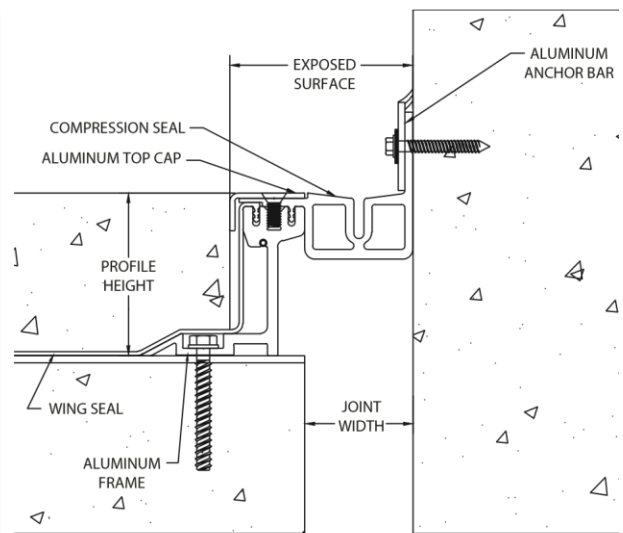
- Material - Uncured Neoprene Flashing



MODEL	JOINT WIDTH	MINIMUM OPENING	MAXIMUM OPENING	EXPOSED SURFACE	BLOCKOUT WIDTH	BLOCKOUT HEIGHT
PPDA-200	51mm	19mm	83mm	121mm	76mm	75mm
PPDA-400x2	102mm	38mm	165mm	171mm	76mm	51mm
PPDA-400x3	102mm	38mm	165mm	171mm	76mm	75mm
PPDAW-200	51mm	19mm	83mm	86mm	76mm	75mm
PPDAW-400x2	102mm	38mm	165mm	137mm	76mm	51mm
PPDAW-400x3	102mm	38mm	165mm	137mm	76mm	75mm



PPDA



PPDAW