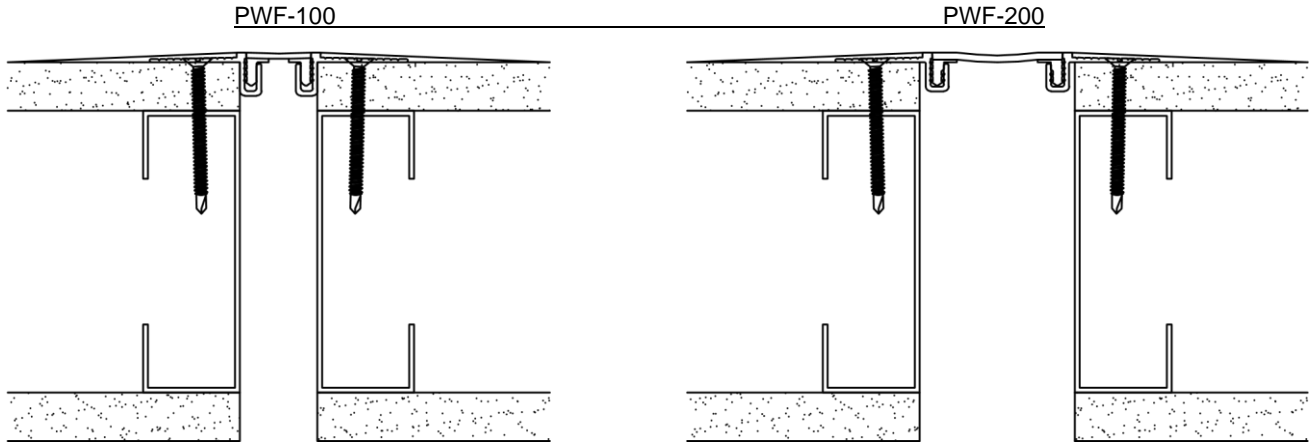


MODEL PWF/PWFC-100/200 INSTALLATION INSTRUCTIONS



IMPORTANT INFORMATION

Prior to the commencement of Installation, all materials **MUST** be inspected for Damage. Any damage must be reported to PINNACLE SOLUTIONS, as soon as possible, so that replacement materials may be furnished without delay.

All work must be completed as per Architect's Approved "Shop Drawings", and in accordance with these Installation Instructions. When installation is complete, all materials must be protected from damage until the Architect's FINAL INSPECTION.

IMPORTANT:

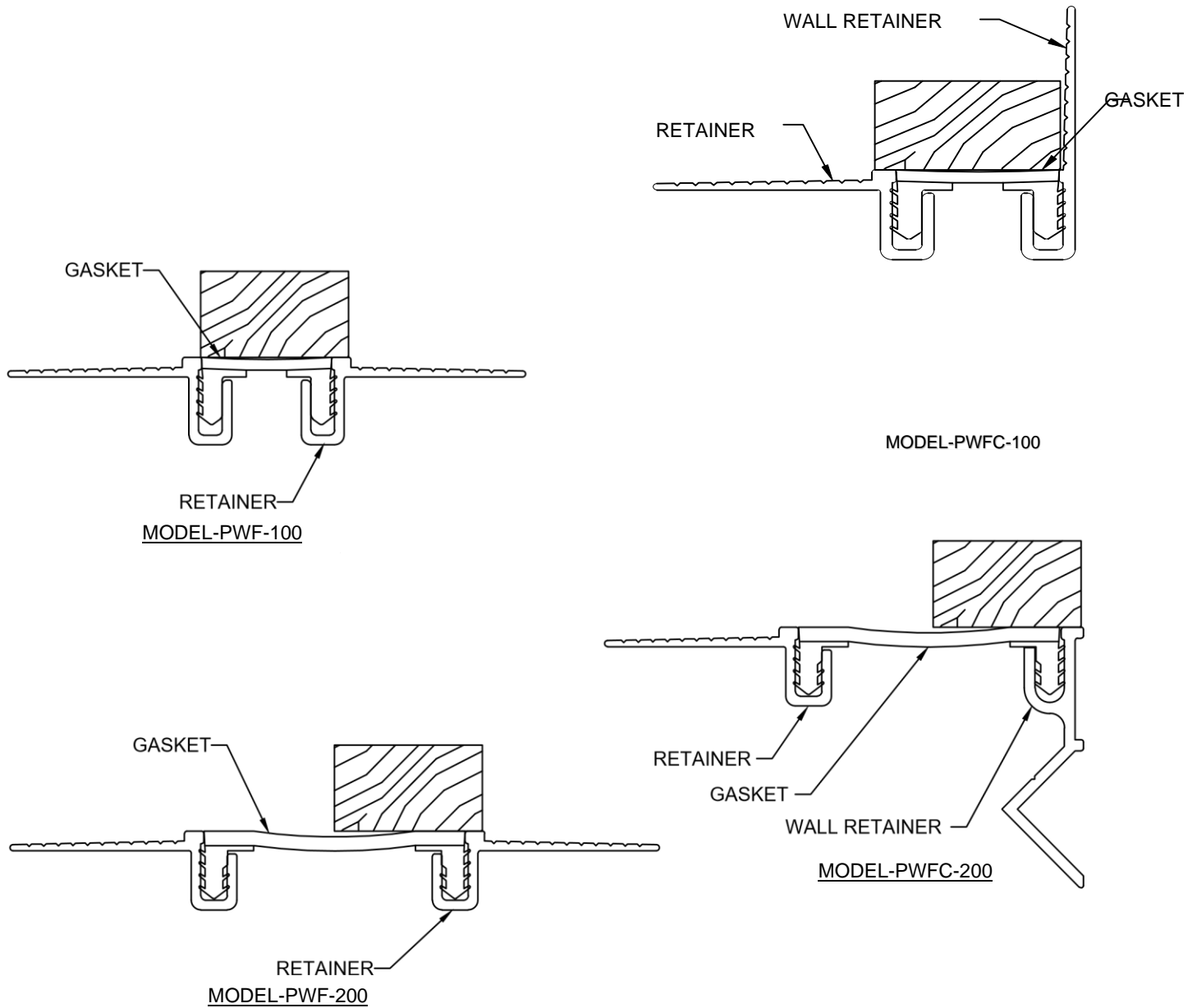
READ THROUGH ALL INSTRUCTIONS PRIOR TO STARTING INSTALLATION

All materials should be arranged in the order that they are to be installed. All hardware required for each portion of the work should be placed with the appropriate materials.

Please review all Approved Shop Drawings and this Document to familiarize yourself with all the details and components of this assembly.

STEP 1

SEAL INSTALLATION



Note:

If a P/S Fire Barrier is to be installed in the joint, please review the Fire Barrier Installation Instructions supplied, and if required install the Fire Barrier BEFORE installation of P/S Expansion Joint aluminum frames.

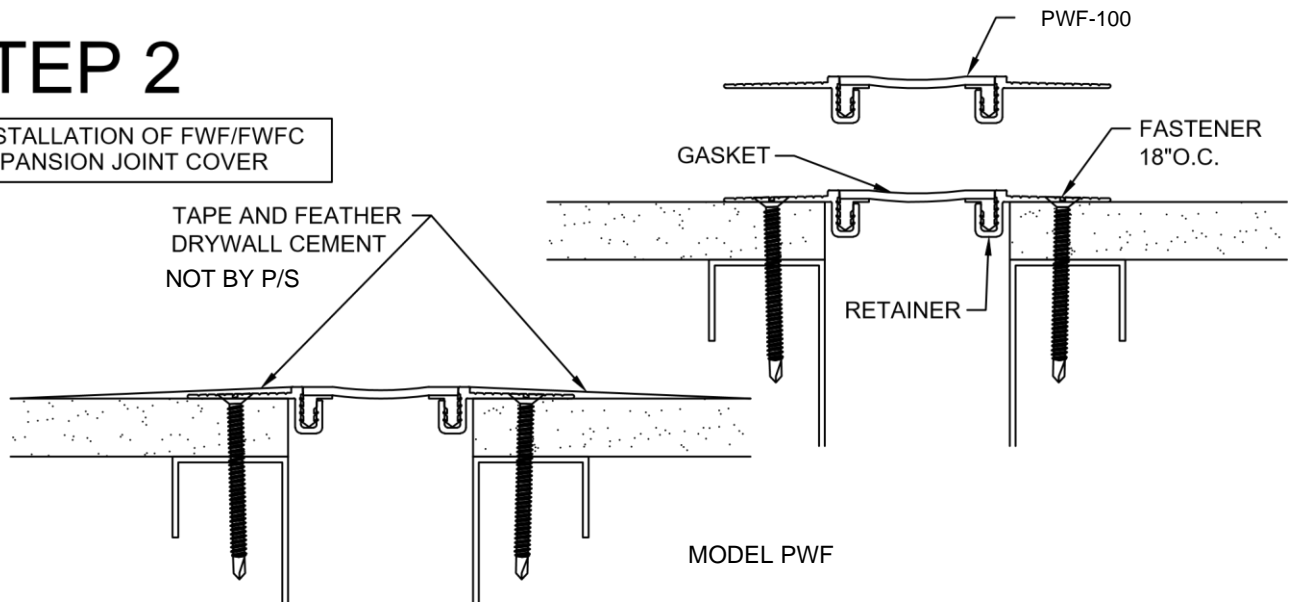
Prior to installation, assemble the gasket and retainers.

- 1.1) Measure and cut the Retainer(s) and gasket to the appropriate length required.
- 1.2) Install the gasket into the aluminum retainers. In most cases hand pressure will be sufficient to seat the gasket into the retainer. If necessary, you may use a rubber mallet and wood block to gently seat the gasket flush with the surface of the retainer.

Tip: If you spray the push in arrows with soapy water, the gasket slides in much easier.

STEP 2

INSTALLATION OF FWF/FWFC EXPANSION JOINT COVER



2.1) With the substrate and expansion joint constructed per the architectural drawings and specifications, align the Joint Cover Assembly over the joint and anchor the aluminum retainers with the P/S Supplied Fasteners.

2.2) Repeat this installation procedure for any additional lengths of Cover required. (See Splicing information in Step 3 on page 5)

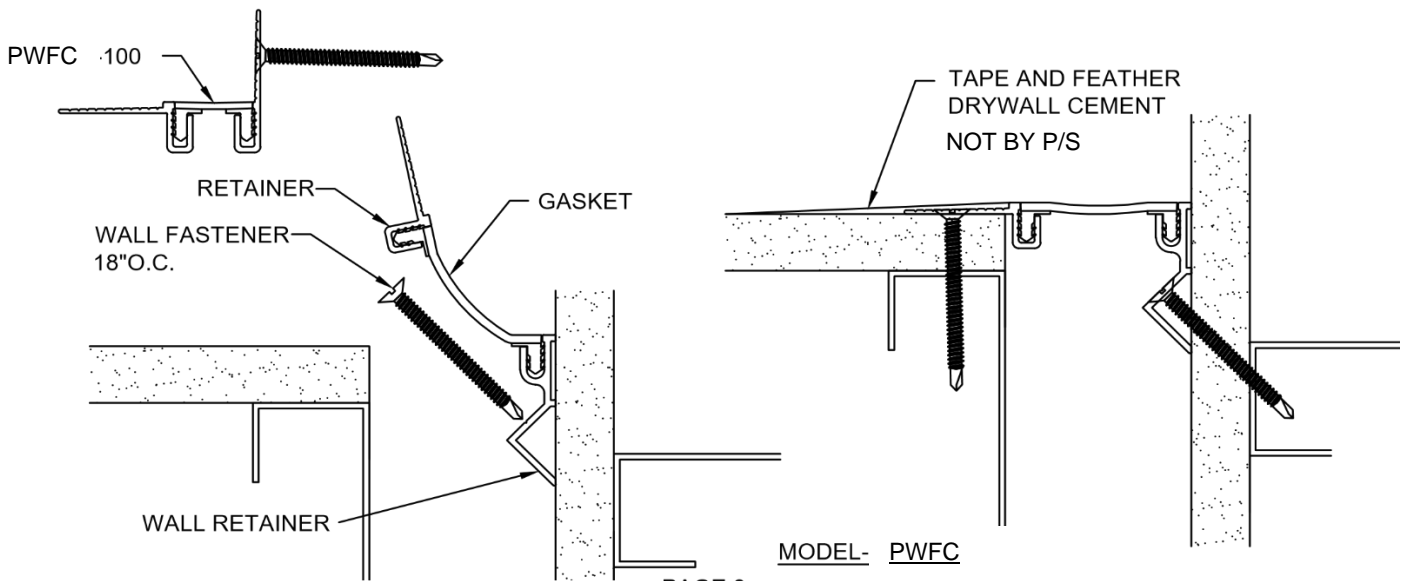
Corner Wall Application:

2.1w) Fasten the corner Wall Retainer into place using the P/S supplied fasteners. Note: (Depending on the wall construction, it may be necessary to pre-drill holes for the P/S supplied fasteners.

2.3w) Position and Fasten the other wall retainer into place with the P/S supplied fasteners.

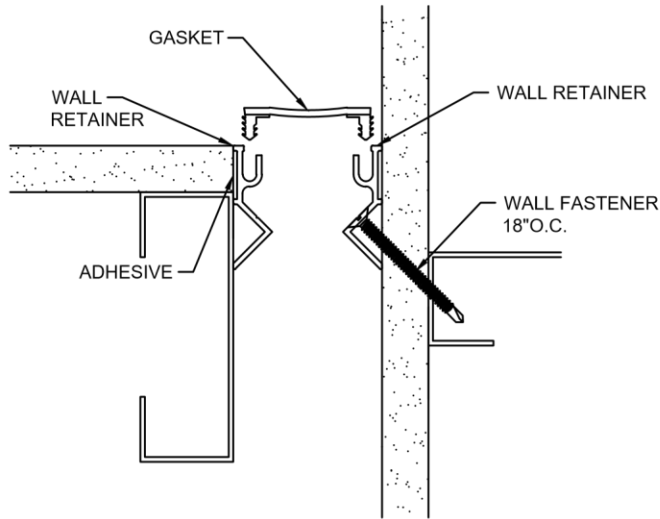
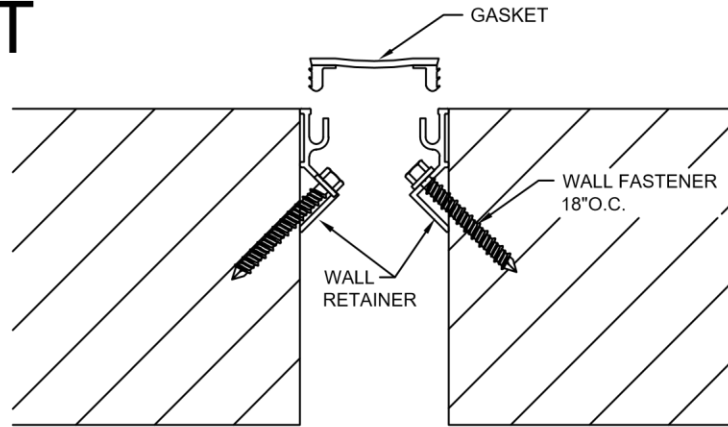
2.4w) Repeat this installation procedure for any additional lengths of Cover required. (See Splicing information in Step 3 on page 5)

2.5w) Tape the edge of the Aluminum Retainer and feather drywall cement to provide a smooth transition to the drywall.



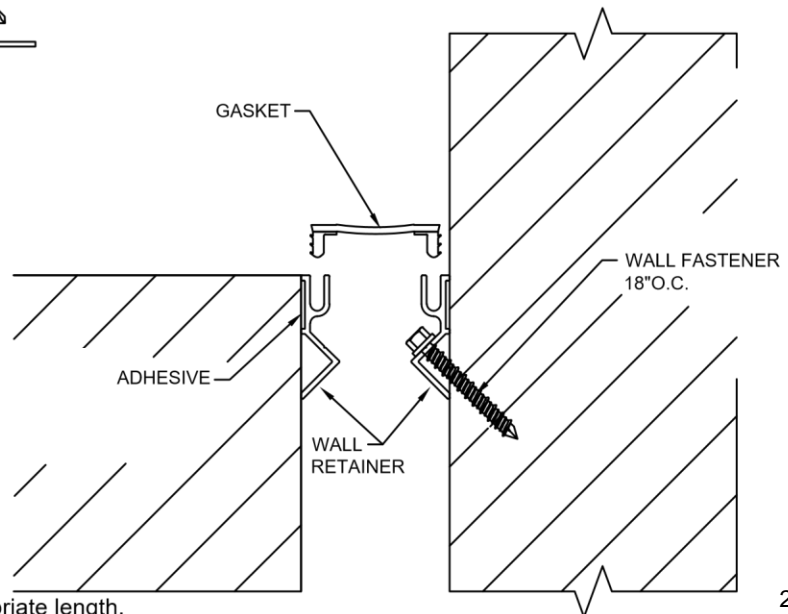
STEP 2 CON'T

INSTALLATION OF FWF/FWFC-M
EXPANSION JOINT COVER.



MODEL PWFC- 200M

MODEL- PWF- 200



Measure and cut the Retainer to the appropriate length.

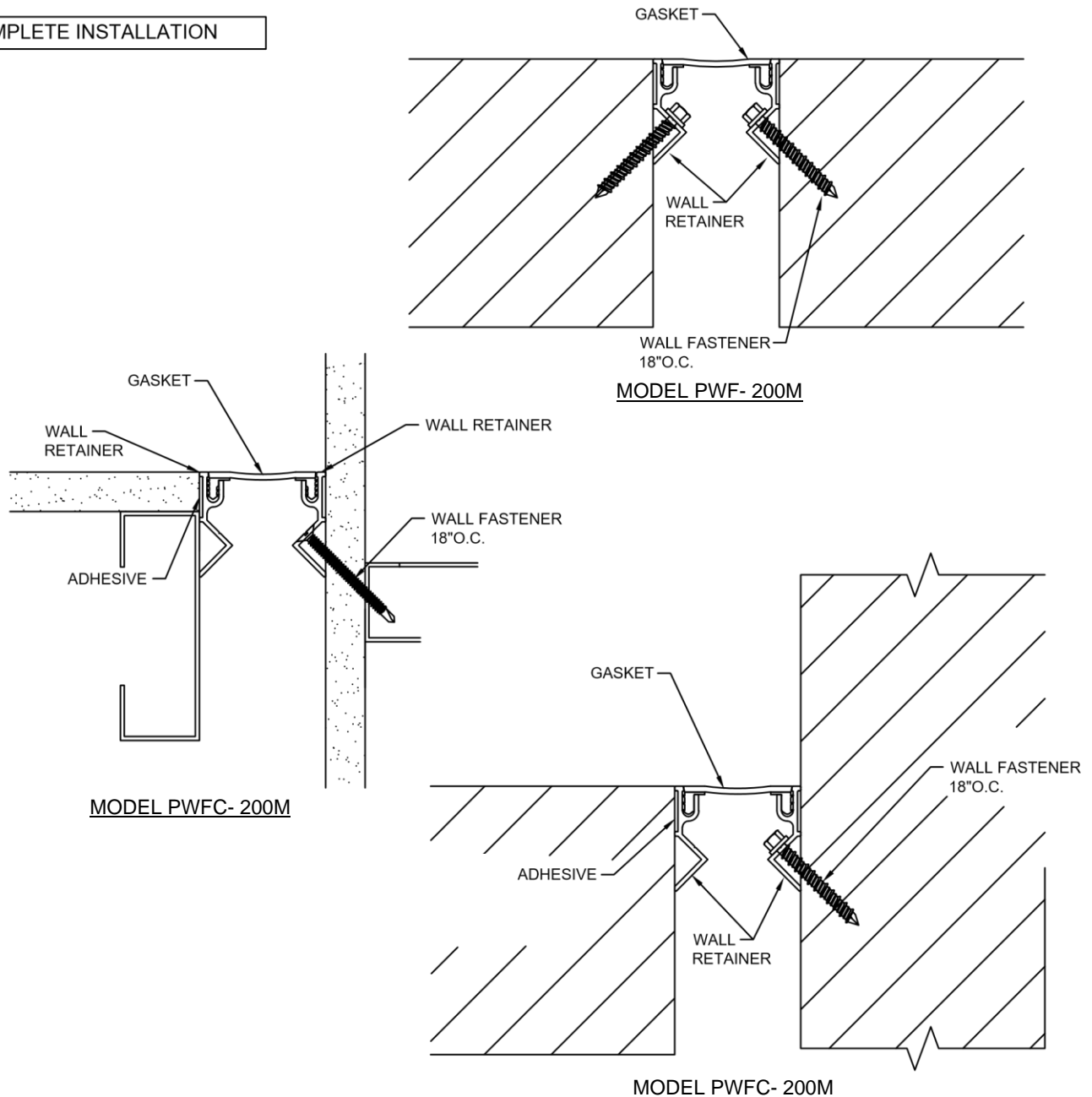
2.6)

- 2.7 Position the Retainer in the joint opening, as shown above.
- 2.8) Anchor the Retainer to the wall with the supplied fasteners and/or supplied adhesive. Note: depending on the wall construction, it may be necessary to pre-drill holes for the supplied fasteners. Repeat for installation of retainer for the other side of the expansion joint.
- 2.9) Corner wall conditions (joint sizes 2") using wall retainers recessed into the joint opening, corner wall side fastened with wall fastener and the other retainer fastened with the supplied adhesive.
- 2.10) Cut the length of seal as needed for the run.
- 2.11) Install the gasket into the aluminum retainer(s). In most cases hand pressure will be sufficient to seat the gasket into the retainer. if necessary, you may use a rubber mallet and wood block to gently seat the gasket flush with the surface of the retainer.

Tip: If you spray the push in arrows with soapy water, the gasket slides in much easier.

STEP 3

COMPLETE INSTALLATION



Splicing:

- 3.1) Wipe ends of seals to be bonded with alcohol (or similar) to remove all dirt, moisture, and oils that might affect the bond. Apply "Super Glue" adhesive (Not Supplied) to the entire cut surface of the seal. **IMPORTANT: PLEASE OBSERVE THE SAFETY PRECAUTIONS ON THE ADHESIVE CONTAINER!**
- 3.2) Align and bring the ends of the two seals together. Apply pressure against the ends of the seal until the adhesive has set.
- 3.3) Tape the edges of the Aluminum Retainer and feather drywall cement to provide a smooth transition to the drywall.
- 3.4) When installation of the P/S Expansion Joint Cover has been completed, remove all residue and foreign matter from the area and joint cover.
- 3.5) Clean the P/S Joint Cover and adjoining surfaces with proper cleaner.
- 3.6) Protect the Joint Cover until the Architect's final inspection.