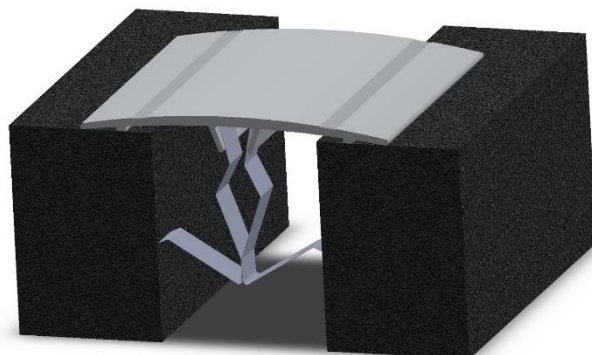


## P-Series

### Technical Data:

Aluminum

- Extrusion – PS uses multiple alloys & tempers which are established to be the most appropriate for the given use of individual parts. Will be one of the following: (6063-T5, T6, T52) (6061-T5, T6, T51) (6105T5, T6) (6005-T5) (6005A-T5, T61), ASTM B221
- Sheet – 6061-T6, 3003-H14, 5005-H34, ASTM B209
- The single-hinged assembly can accommodate a 13/8" slab offset in floor elevation
- Standard Loading
- 2,000 lbs.



MODEL	JOINT WIDTH	MINIMUM OPENING	MAXIMUM OPENING	EXPOSED SURFACE	BLOCKOUT WIDTH	BLOCKOUT HEIGHT
P-90	50mm	20mm	90mm	90mm	N/A	N/A
P-120	75mm	45mm	120mm	120mm	N/A	N/A
P-90A	50mm	19mm	70mm	73mm	N/A	N/A

### WALL TO WALL PLATES

#### P-90

90



#### P-120

120



#### P-90A



### INSTALLATION OPTIONS

Cover strips for small joints (25 or 50mm) are installed using stainless steel clips supplied with the products. Please note the minimum joint depth requirements in the table above.



P-90 installed over 25mm joint width using small clip option.



P-90 installed over 50mm joint width using large clip option.

Heavy duty plates (P-HD) are installed using screw fixings (by others, to suit substrate) on one side of the joint opening.



W-160HD

### MATERIALS, COLOURS AND FINISH:

P I N N A C L E<sup>®</sup>  
E X P A N S I O N J O I N T S C O V E R S Y S T E M S

Aluminium cover strips are supplied with a natural anodised finish as standard, or can be powder coated upon request (subject to minimum order quantities)

**STOCK LENGTHS:**

Aluminium sections: 3m

**COMPLEMENTARY WALL/CEILING COVERS:**

P Series 461

**FIXINGS:**

- Standard duty options - installation using clips (supplied by PS) - at 300mm centres
- Heavy duty options - installation using screw fixings (by others, to suit substrate) - at 275mm centres and to achieve minimum 40mm embedment.
- Plates are supplied pre-drilled.