

EXPANSION JOINTS COVER SYSTEMS

PFWX & PFWCX

Aluminum

- Extrusion - P/S uses multiple alloys & tempers which are established to be the most appropriate for the given use of individual parts are (6063-TS, T6, T52) as per ASTM B221 Profiles can be customized as per following alloys (6061-15, 16, 151) (6105-15, 16) (6005-15) (6005-T5, T61), as per ASTM Code B221

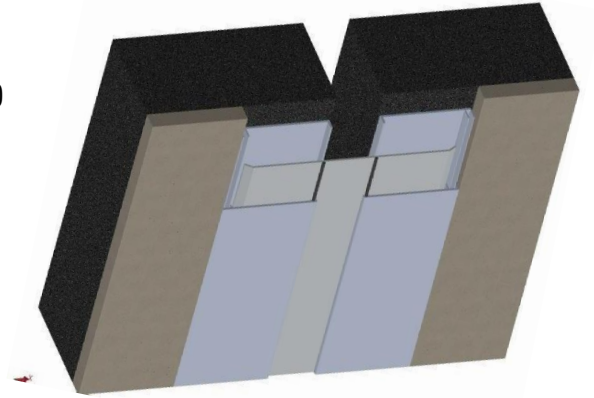
- Sheet - 6061-T6, 3003-H14, 5005-H34, ASTM B209

Duroflex Gasket

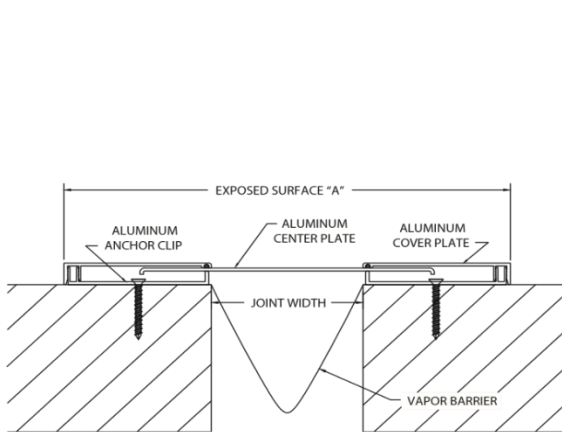
- Single Durometer - 65 Shore A, ASTM D2000
- Color - Black

Vapor Barrier

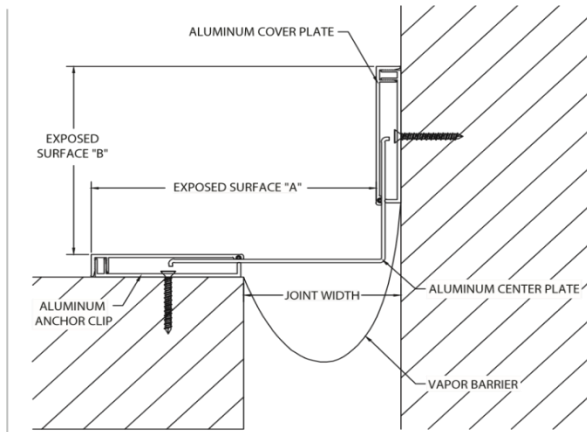
- Material - EPDM (Ehylene Propylene Diene Monomer).



MODEL	JOINT WIDTH	MINIMUM OPENING	MAXIMUM OPENING	EXPOSED SURFACE "A"	EXPOSED SURFACE "B"	BLOCKOUT WIDTH	BLOCKOUT HEIGHT
PFW-100X	25mm	10mm	48mm	125mm	N/A	51mm	16mm
PFW-200X	51mm	10mm	89mm	197mm	N/A	73mm	16mm
PFW-400X	102mm	25mm	184mm	294mm	N/A	99mm	16mm
PFW-600X	152mm	76mm	229mm	349mm	N/A	99mm	16mm
PFW-800X	203mm	102mm	305mm	457mm	N/A	127mm	16mm
PFWC-100X	25mm	16mm	37mm	60mm	51mm	51mm	16mm
PFWC-200X	51mm	30mm	70mm	107mm	76mm	73mm	16mm
PFWC-400X	102mm	62mm	143mm	181mm	133mm	99mm	16mm
PFWC-600X	152mm	113mm	187mm	235mm	133mm	99mm	16mm
PFWC-800X	203mm	152mm	254mm	314mm	133mm	127mm	16mm



PFW



PFWC