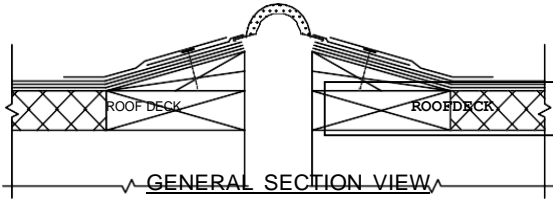


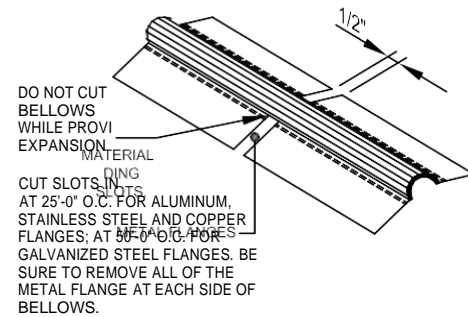
EXPAND-O-FLASH ROOF TO ROOF FLANGE STYLE EJ INSTALLATION INSTRUCTIONS



SEE INSTALLATION ADDENDUM 'A' FOR BELLOWS SIZES 18" AND GREATER

STEP 1

NOTE: STEP 1 NOT REQUIRED FOR EXPAND-O-FLASH MATERIAL PROVIDED IN 10' LENGTHS

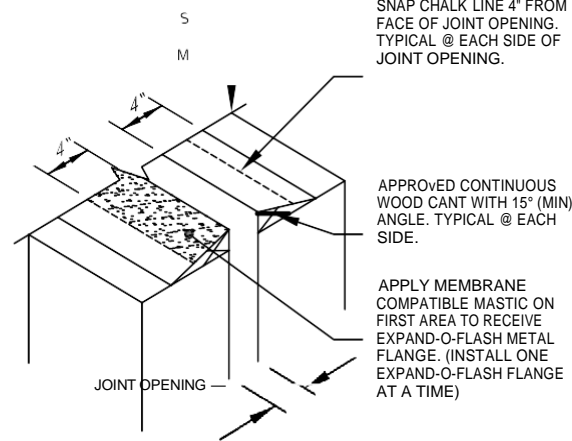


FOR ROLLED EXPAND-O-FLASH PRODUCTS; CUT SLOTS IN METAL FLANGES TO ALLOW EXPANSION. CUT SLOTS AT 25'-0" ON-CENTER FOR ALUMINUM, STAINLESS STEEL AND COPPER FLANGES; AT 50'-0" ON-CENTER FOR GALVANIZED

FLANGES. PROVIDE FULL SPLICE AT EACH OF THESE LOCATIONS AS DESCRIBED IN THE EXPAND-O-FLASH SPLICING INSTALLATION INSTRUCTIONS BELOW.

STEP 2

MANUFACTURER'S APPROVED ROOFING SYSTEM

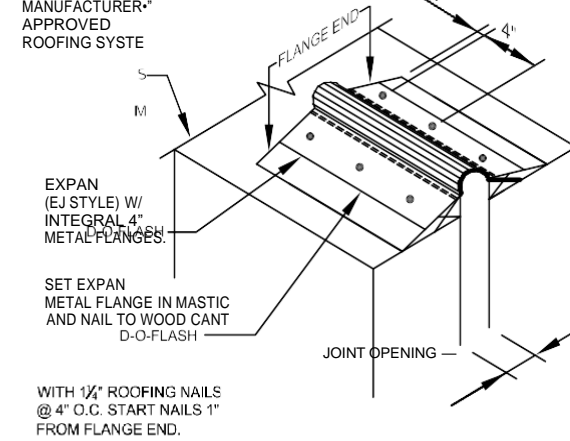


SNAP CHALK LINE 4" FROM FACE OF JOINT OPENINGS, TYPICAL @ EACH SIDE OF JOINT OPENING. APPLY MEMBRANE COMPATIBLE MASTIC ON 4" WIDE AREA OVER WOOD CANT TO RECEIVE EXPAND-O-FLASH METAL

FLANGE. INSTALL ONE EXPAND-O-FLASH FLANGE AT A TIME.

STEP 3

MANUFACTURER'S APPROVED ROOFING SYSTEM

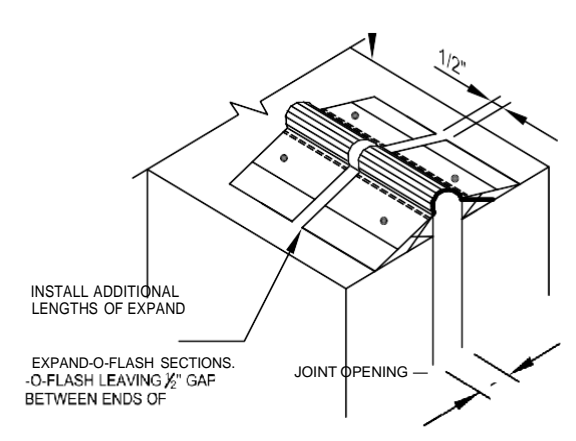


SET EXPAND-O-FLASH FLANGE IN MEMBRANE COMPATIBLE MASTIC AND NAIL TO WOOD CANT W/ (1) 1 1/2" ROOF NAIL @ 4" O.C. START NAILS 1" FROM FLANGE END. *REPEAT STEPS 1 THRU 3 FOR OPPOSITE EXPAND-O-FLASH

FLANGE, BEING CAREFUL TO ALIGN 2ND FLANGE WITH CHALK LINE TO ALLOW PROPER BELLOWS SHAPE.

STEP 4

MANUFACTURER'S APPROVED ROOFING SYSTEM



REPEAT STEPS 1 THRU 3 FOR REMAINING SECTIONS OF EXPAND-O-FLASH BEING SURE TO PROVIDE 1/2" GAP BETWEEN ENDS OF EXPAND-O-FLASH SECTIONS.

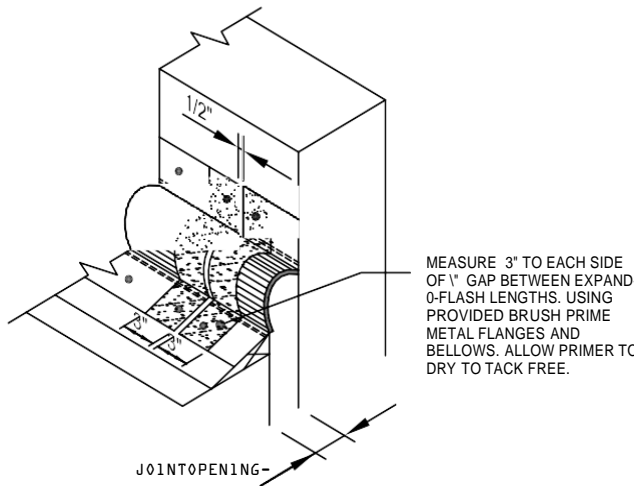
PROVIDE FULL SPLICE AT EACH OF THESE LOCATIONS AS DESCRIBED IN THE EXPAND-O-FLASH SPLICING INSTALLATION INSTRUCTIONS BELOW.

EXPAND-O-FLASH SPLICING INSTALLATION INSTRUCTIONS

GENERAL NOTES:

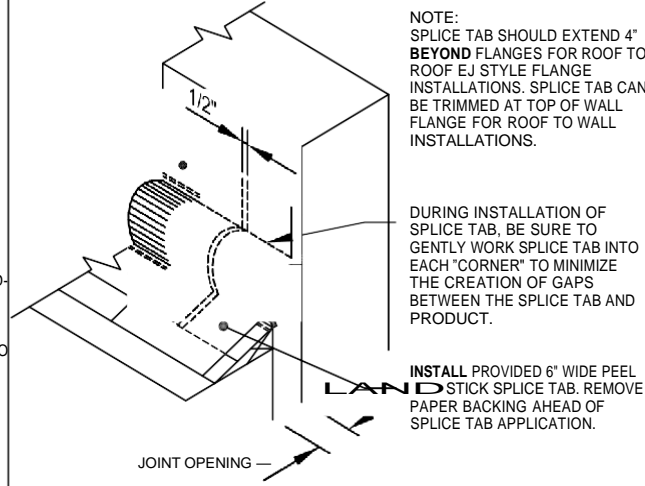
- THESE INSTALLATION INSTRUCTIONS REPRESENT THE CORRECT INSTALLATION PROCEDURE FOR A 6" WIDE SPLICE TAB WHICH IS INCLUDED FOR BELLOWS SIZES 4" THRU 12". THE DIMENSIONS INDICATED IN THESE INSTRUCTIONS MUST BE ADJUSTED ACCORDINGLY FOR BELLOWS SIZES LARGER THAN 12" WHICH WILL INCLUDE A 9" WIDE SPLICE TAB.

STEP 'A'



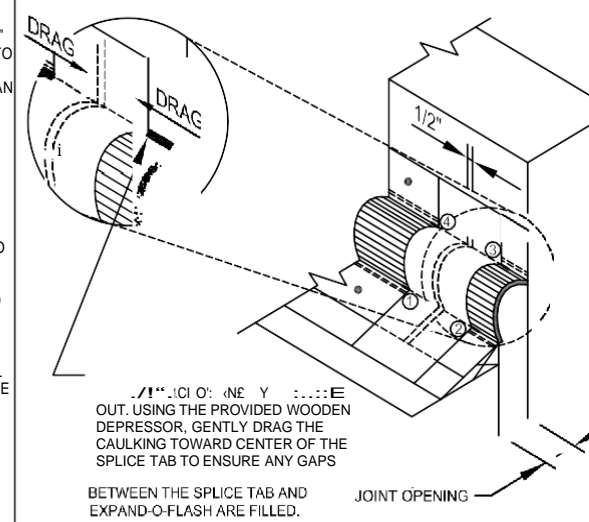
MEASURE 3" TO EACH SIDE OF 7/8" GAP BETWEEN EXPAND-O-FLASH LENGTHS. USING PROVIDED BRUSH PRIME METAL FLANGES AND BELLOWS. ALLOW PRIMER TO DRY TO TACK FREE. TYPICAL @ EACH SPLICE LOCATION.

STEP 'B'



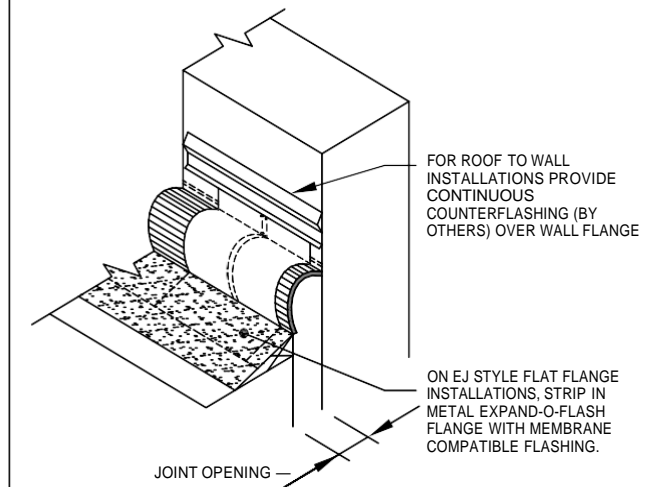
INSTALL PROVIDED 6" WIDE PEEL AND STICK SPLICE TAB. REMOVE PAPER BACKING AHEAD OF SPLICE TAB APPLICATION BEING SURE NOT TO STRETCH THE SPLICE TAB AND WORKING IT INTO EACH CREVICE. SPLICE TAB MUST EXTEND AN ADDITIONAL 4" (MINIMUM) BEYOND FLANGE ON ROOF SIDE.

STEP 'C'



APPLY 1/4" x 1" LONG BEAD OF CAULKING BEGINNING AT THE EDGE OF THE SPLICE TAB AND WORKING OUT. USING THE PROVIDED WOODEN DEPRESSOR, GENTLY DRAG THE CAULKING TOWARD CENTER OF THE SPLICE TAB TO ENSURE ANY GAPS BETWEEN THE SPLICE TAB AND EXPAND-O-FLASH ARE FILLED. TYPICAL @ FOUR LOCATION PER SPLICE TAB AND TYPICAL @ EACH SPLICED LOCATION.

STEP 'D'

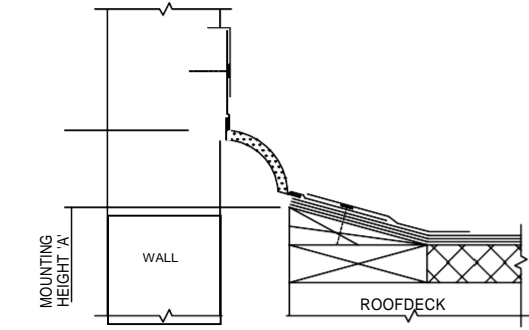


ON EJ STYLE FLAT FLANGE INSTALLATIONS, STRIP IN METAL EXPAND-O-FLASH FLANGE WITH MEMBRANE COMPATIBLE FLASHING. FOR ROOF TO WALL INSTALLATIONS PROVIDE CONTINUOUS COUNTERFLASHING (BY OTHERS) OVER WALL FLANGE.

INSTALLATION INSTRUCTION NOTES:

- INSTALL ALL FACTORY FABRICATED INTERSECTIONS AND TRANSITIONS FIRST. FOLLOW THE APPROPRIATE STEPS INCLUDED IN THESE INSTALLATION INSTRUCTION FOR THESE ITEMS.
- LEAVE 1/2" GAP BETWEEN THE START OF STRAIGHT EXPAND-O-FLASH SECTION AND ALL INTERSECTIONS AND TRANSITIONS. FOR EXPAND-O-FLASH PRODUCT PROVIDED IN 50'-0" OR 100'-0" ROLLS; CUT SLOTS IN METAL FLANGES TO ALLOW FOR THERMAL APPROPRIATE EXPANSION. CUT SLOTS AT 25'-0" ON-CENTER FOR ALUMINUM, STAINLESS STEEL AND COPPER FLANGES; AT 50'-0" ON-CENTER FOR GALVANIZED FLANGES. PROVIDE FULL SPLICE AT THESE LOCATIONS AS DESCRIBED IN THESE INSTALLATION INSTRUCTIONS. DO NOT CUT BELLOWS MATERIAL WHILE PROVIDING EXPANSION SLOTS.
- THE BUILDING/ROOF SURFACES TO WHICH THE EXPAND-O-FLASH IS TO BE INSTALLED SHOULD BE SMOOTH, CLEAN AND FREE OF ANY DIRT AND DEBRIS.
- INSTALL EXPAND-O-FLASH WITH THE FOAM BACKER FACING THE INSIDE OF BUILDING. DO NOT EXPOSE FOAM TO WEATHER.
- SEE SPLICING INSTRUCTIONS ABOVE, FOR TYPICAL
- SEE INSTALLATION ADDENDUM 'A' ON PAGE 2 FOR BELLOWS SIZES 18" AND GREATER

**EXPAND-O-FLASH
ROOF TO WALL
FLANGE STYLE EJ
INSTALLATION INSTRUCTIONS**



GENERAL SECTION VIEW

MOUNTING HEIGHT 'A'

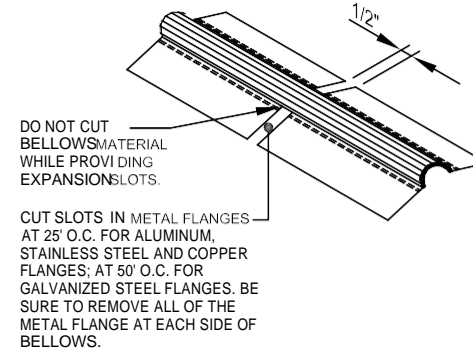
BELLOWS MOUNTING HEIGHT 'A' FOR ROOF TO WALL ATTACHMENT

BELLOWS WIDTH	MOUNTING HEIGHT 'A'
4"	2 1/2"
6"	3 3/4"
8"	5 1/8"
10"	6 3/8"
12"	7 1/2"
14"	8 3/4"
16"	10 1/4"
18"	11 1/2"
20"	12 3/4"
22"	14"
24"	15 1/4"

THE MOUNTING HEIGHTS PROVIDED ABOVE ARE APPLICABLE FOR ANY CONDITION IN WHICH THE EXPAND-O-FLASH IS BEING MOUNTED IN A ROOF TO WALL CONDITION.

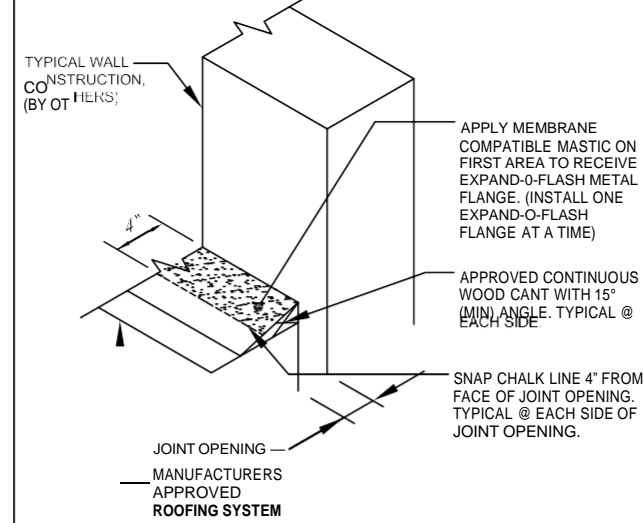
STEP 1

NOTE: STEP 1 NOT REQUIRED FOR EXPAND-O-FLASH MATERIAL PROVIDED IN 10' LENGTHS



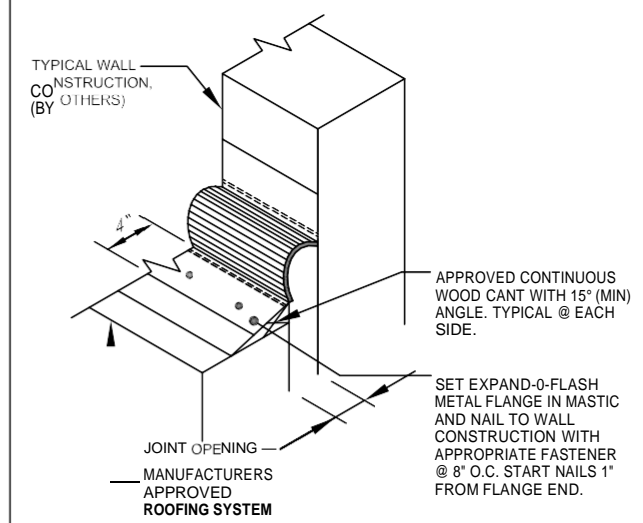
FOR ROLLED EXPAND-O-FLASH PRODUCTS; CUT SLOTS IN METAL FLANGES TO ALLOW EXPANSION. CUT SLOTS AT 25'-0" ON-CENTER FOR ALUMINUM, STAINLESS STEEL AND COPPER FLANGES; AT 50'-0" ON-CENTER FOR GALVANIZED STEEL FLANGES. PROVIDE FULL SPLICE AT EACH OF THESE LOCATIONS AS DESCRIBED IN THE EXPAND-O-FLASH SPlicing INSTALLATION INSTRUCTIONS ON THE REVERSE.

STEP 2



ON THE ROOF SIDE, SNAP A CHALK LINE 4" FROM FACE OF JOINT OPENINGS. APPLY MEMBRANE COMPATIBLE MASTIC ON 4" WIDE AREA OVER WOOD CANT TO RECEIVE EXPAND-O-FLASH METAL FLANGE.

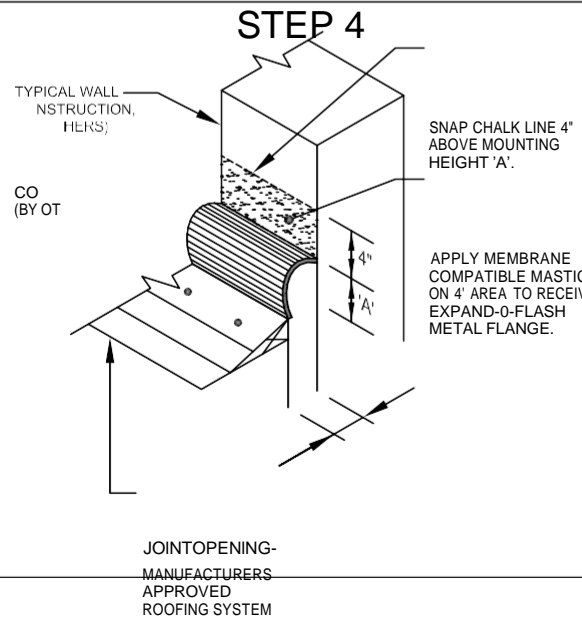
STEP 3



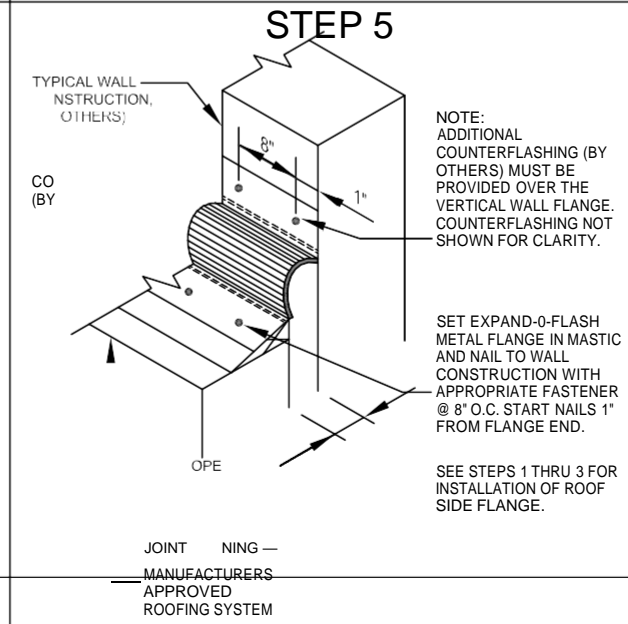
SET EXPAND-O-FLASH FLANGE IN MEMBRANE COMPATIBLE MASTIC AND NAIL TO WOOD CANT W/ (1) 1 3/4" ROOF NAIL @ 4" O.C. START NAILS 1" FROM FLANGE END.

SEE INSTALLATION ADDENDUM 'A' FOR BELLOWS SIZES 18" AND GREATER

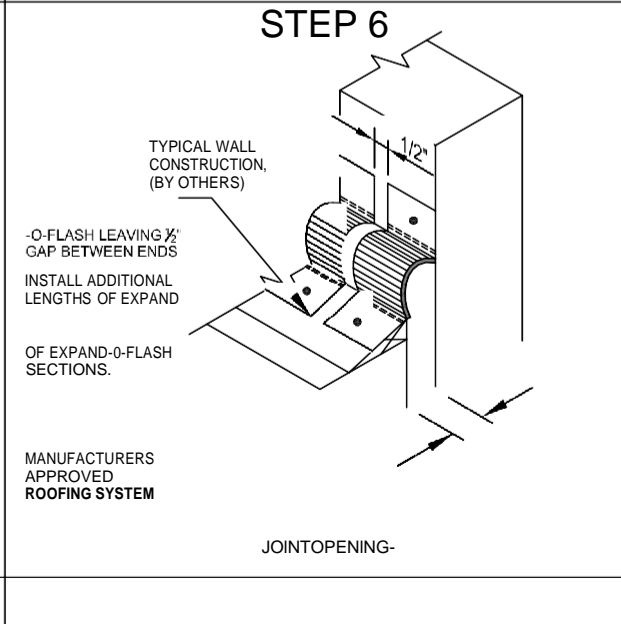
INSTALLATION ADDENDUM 'A'



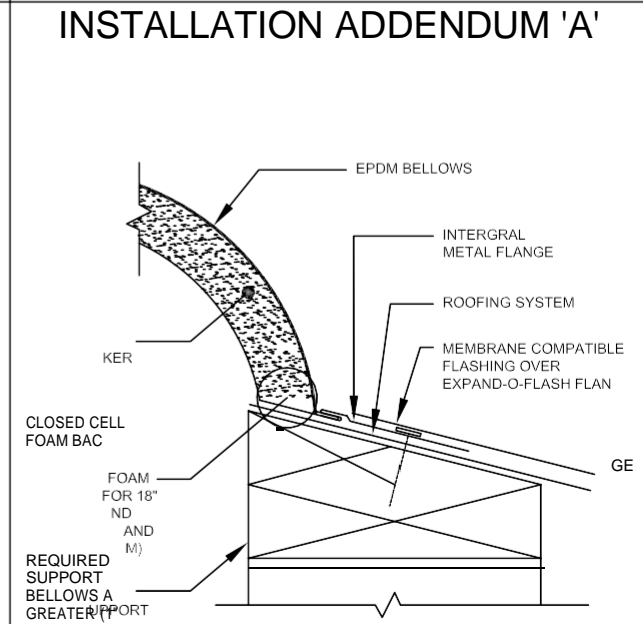
FOLD OVER WALL FLANGE TO GAIN ACCESS TO ATTACHMENT LOCATION. SNAP CHALK LINE 4" ABOVE MOUNTING HEIGHT 'A'. SEE MOUNTING HEIGHT 'A' CHART FOR CORRECT DIMENSION. APPLY MEMBRANE COMPATIBLE MASTIC ON 4" WIDE AREA TO RECEIVE EXPAND-O-FLASH METAL WALL FLANGE.



SET EXPAND-O-FLASH WALL FLANGE IN MEMBRANE COMPATIBLE MASTIC AND NAIL TO WALL CONSTRUCTION W/ (1) APPROPRIATE FASTENER @ 8" O.C. START FASTENERS 1" FROM FLANGE END.



REPEAT STEPS 1 THRU 5 FOR REMAINING SECTIONS OF EXPAND-O-FLASH BEING SURE TO PROVIDE 7/8" GAP BETWEEN ENDS OF EXPAND-O-FLASH SECTIONS. PROVIDE FULL SPLICE AT EACH OF THESE LOCATIONS AS DESCRIBED IN THE EXPAND-O-FLASH SPlicing INSTALLATION INSTRUCTIONS ON REVERSE.



INSTALLATION INSTRUCTION NOTES:

- INSTALL ALL FACTORY FABRICATED INTERSECTIONS AND TRANSITIONS FIRST. FOLLOW THE APPROPRIATE STEPS INCLUDED IN THESE INSTALLATION INSTRUCTION FOR THESE ITEMS.
- LEAVE 7/8" GAP BETWEEN THE START OF STRAIGHT EXPAND-O-FLASH SECTION AND ALL INTERSECTIONS AND TRANSITIONS. FOR EXPAND-O-FLASH PRODUCT PROVIDED IN 50'-0" OR 100'-0" ROLLS; CUT SLOTS IN METAL FLANGES TO ALLOW FOR THERMAL APPROPRIATE EXPANSION. CUT SLOTS AT 25'-0" ON-CENTER FOR ALUMINUM, STAINLESS STEEL AND COPPER FLANGES; AT 50'-0" ON-CENTER FOR GALVANIZED FLANGES. PROVIDE FULL SPLICE AT THESE LOCATIONS AS DESCRIBED IN THESE INSTALLATION INSTRUCTIONS. DO NOT CUT BELLOWS MATERIAL WHILE PROVIDING EXPANSION SLOTS.
- THE BUILDING/ROOF SURFACES TO WHICH THE EXPAND-O-FLASH IS TO BE INSTALLED SHOULD BE SMOOTH, CLEAN AND FREE OF ANY DIRT AND DEBRIS.
- INSTALL EXPAND-O-FLASH WITH THE FOAM BACKER FACING THE INSIDE OF BUILDING. DO NOT EXPOSE FOAM TO WEATHER.
- SEE SPlicing INSTRUCTIONS ON REVERSE, FOR TYPICAL
- SEE INSTALLATION ADDENDUM 'A' ON PAGE 2 FOR BELLOWS SIZES 18" AND GREATER