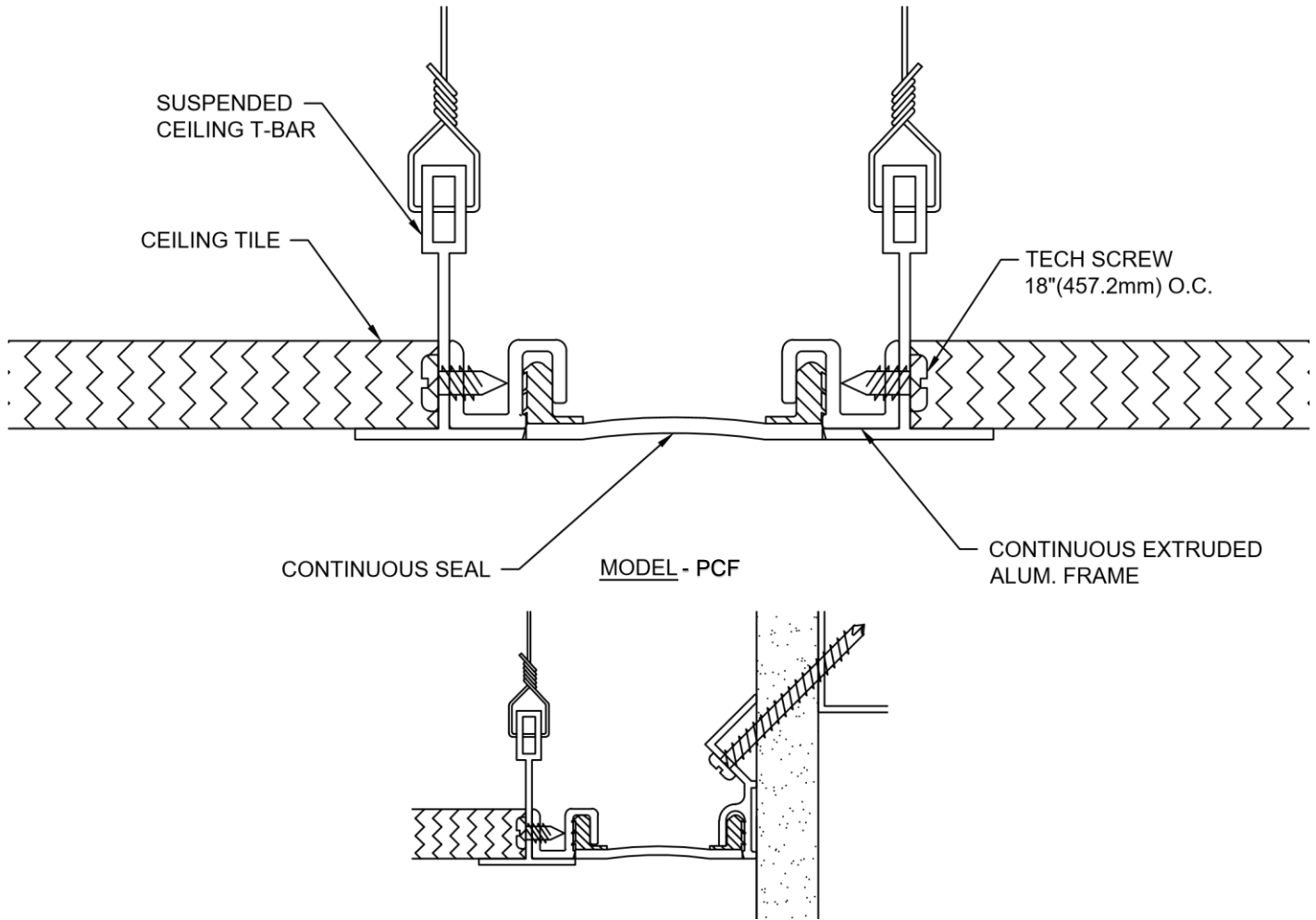


MODEL PCF-100 THRU 200 INSTALLATION INSTRUCTIONS



IMPORTANT INFORMATION

MODEL-PCFC

Prior to the commencement of Installation, all materials **MUST** be inspected for Damage. Any damage must be reported to PINNACLE SOLUTIONS, as soon as possible, so that replacement materials may be furnished without delay.

All materials should be arranged in the order that they are to be installed. All hardware required for each portion of the work should be placed with the appropriate materials.

All work must be completed as per Architect's Approved "Shop Drawings", and in accordance with these Installation Instructions. When installation is complete, all materials must be protected from damage until the Architect's FINAL INSPECTION.

Please review all Approved Shop Drawings and this Document to familiarize yourself with all the details and components of this assembly.

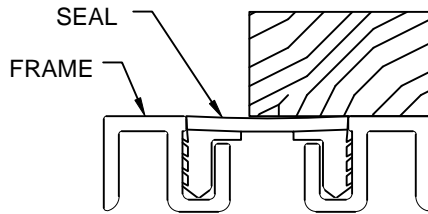
IMPORTANT:

READ THROUGH ALL INSTRUCTIONS PRIOR TO STARTING INSTALLATION

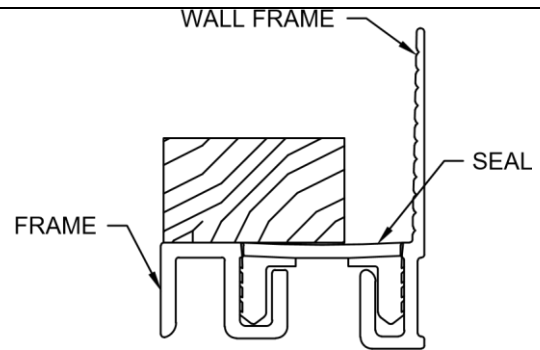
Read through all the steps of these instructions prior to beginning work.

STEP 1

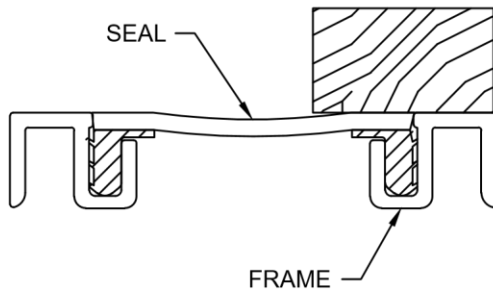
SEAL INSTALLATION



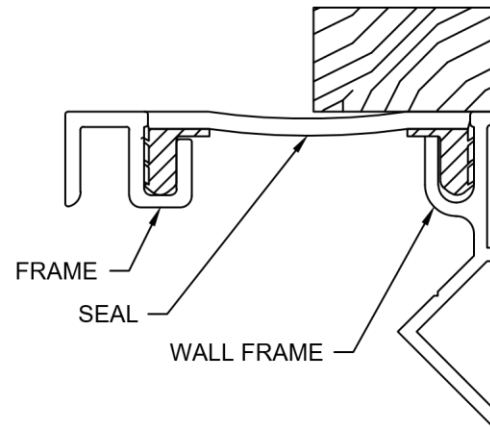
MODEL-PCF-100



MODEL-PCFC-100



MODEL-PCF-200



MODEL-PCFC-200

Note: Prior to installation, the Cover must be assembled.

- 1.1) Measure and cut two lengths of Frame to the required length (max. 20').
- 1.2) Insert Seal into Frames. If necessary, you may use a rubber mallet and a wood block to gently seat the seal flush with the surface of the retainer.

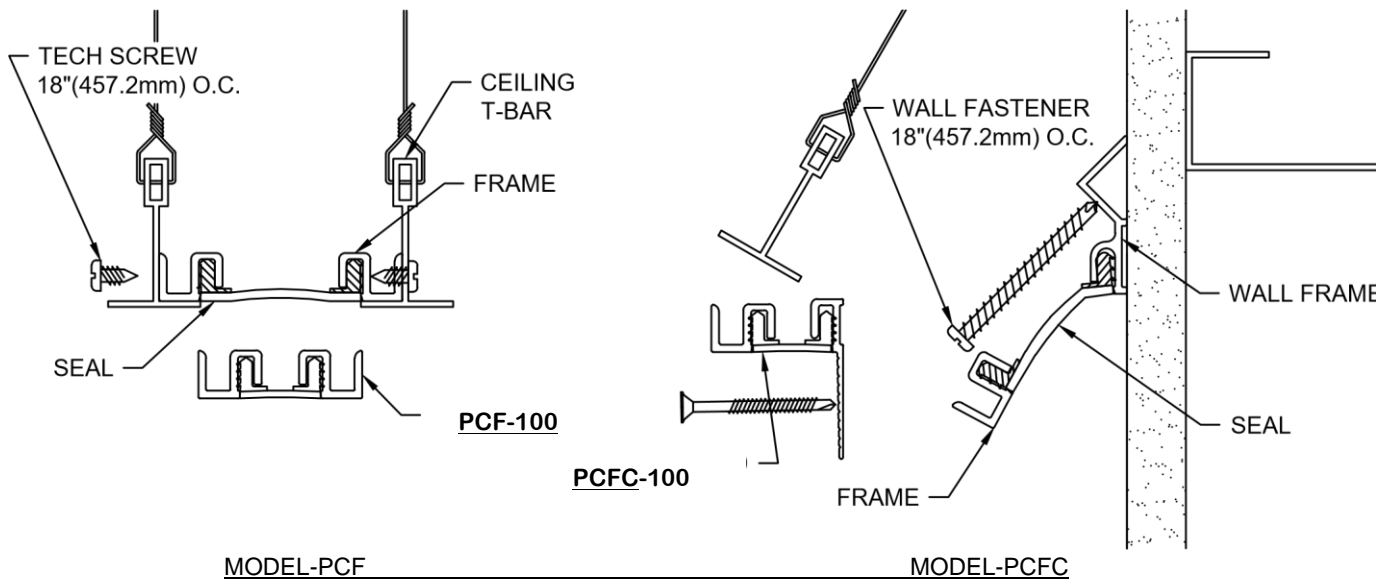
Tip: If you spray the push in arrows with soapy water, the Seals slide much easier.

Splicing (If Required)

- 1.3) Wipe ends of seals to be bonded with alcohol (or similar) to remove all dirt, moisture, and oils that might affect the bond.
- 1.4) Apply "Super Glue" adhesive (Not Supplied) to the entire cut surface of the seal. **IMPORTANT: PLEASE OBSERVE THE SAFETY PRECAUTIONS ON THE ADHESIVE CONTAINER!**
- 1.5) Align and bring the ends of the seals together. Apply pressure against the ends of the seal until adhesive has set.

STEP 2

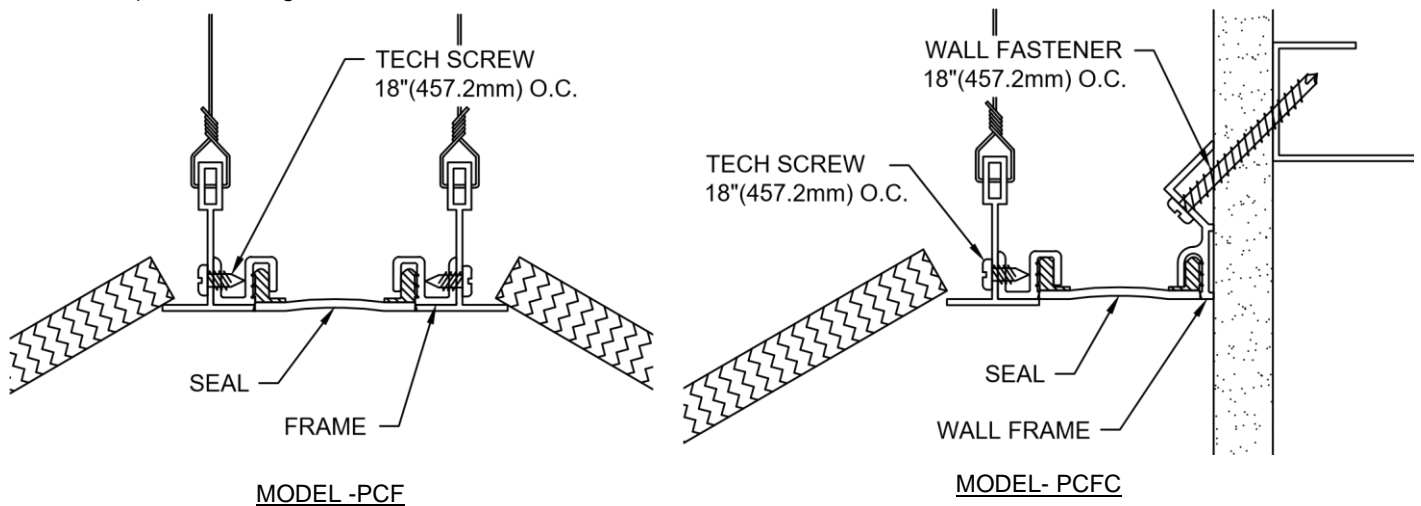
INSTALLATION



- 2.1) Prior to installing the ceiling tiles, place the Cover in between the Ceiling T-bars (see PCF detail above).
- 2.2) Fasten the Frames onto Ceiling T-bars using the P/S supplied screws.
- 2.3) Repeat this installation procedure for any additional lengths of Cover required.
- 2.4) Install ceiling tiles.

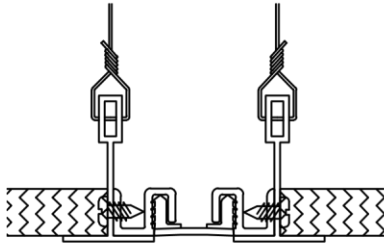
Ceiling to Wall Application:

- 2.1w) Prior to installing the ceiling tiles, place the Cover in between the Ceiling T-bars and the wall.
- 2.2w) Move the ceiling track and the Seal out of the way. Fasten the Wall Frame into place using the P/S supplied wall fastener.
Note: Depending on the wall construction, it may be necessary to pre-drill holes for the P/S supplied fasteners.
- 2.3w) Fasten the Frames onto ceiling track using the P/S supplied screws.
- 2.4w) Repeat this installation procedures for any additional lengths of Cover.
- 2.5w) Install ceiling tiles.

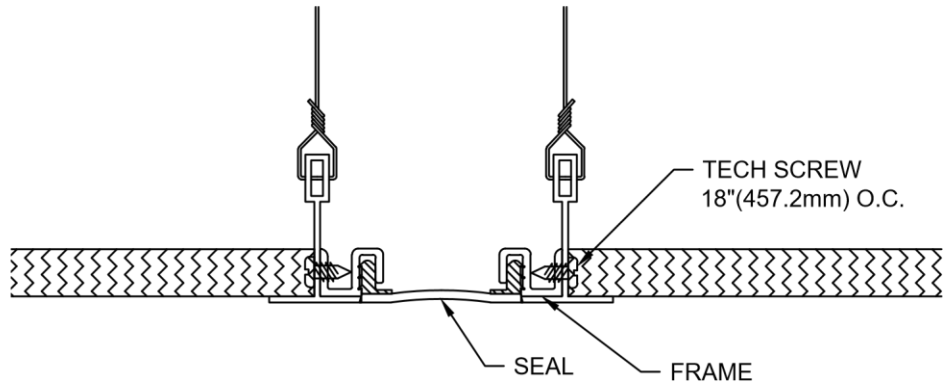


STEP 3

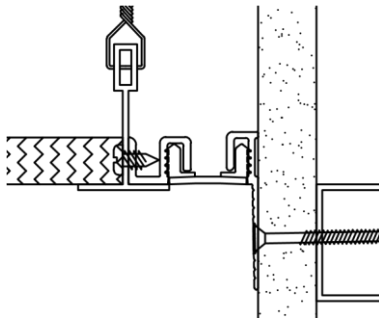
COMPLETE INSTALLATION



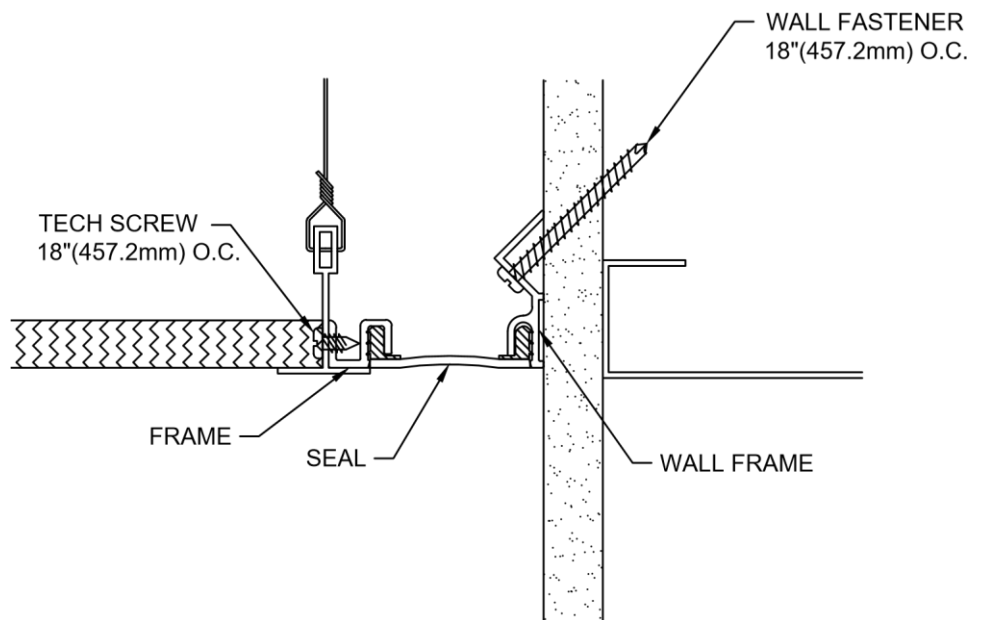
MODEL-PCF-100



MODEL-PCF-200



MODEL-PCFC-100



MODEL-PCFC-200

- 3.1) When installation of the P/S Expansion Joint Cover has been completed, remove all residue and foreign matter from the area and joint cover.
- 3.2) Clean the P/S Joint Cover and adjoining surfaces with proper cleaner.
- 3.3) Protect the Joint Cover until the Architect's final inspection.