

## PPTCP & PPTCPW

### Technical Data:

#### Aluminum

Extrusion: PS uses multiple alloys & tempers which are established to be the most appropriate for the given use of individual parts are (6063-T5, T6, T52) as per ASTM B221.

- Profiles can be customised as per (6061-T5, T6, T51) (6105-T5, T6) (6005-T5) (6005A-T5, T61), as per ASTM B221
- Sheet – 19000 M, 19000 H2, 31000 H2, 31000 H3, 1100/1200, As per IS 737/ ASTM B209.

#### Stainless Steel\*

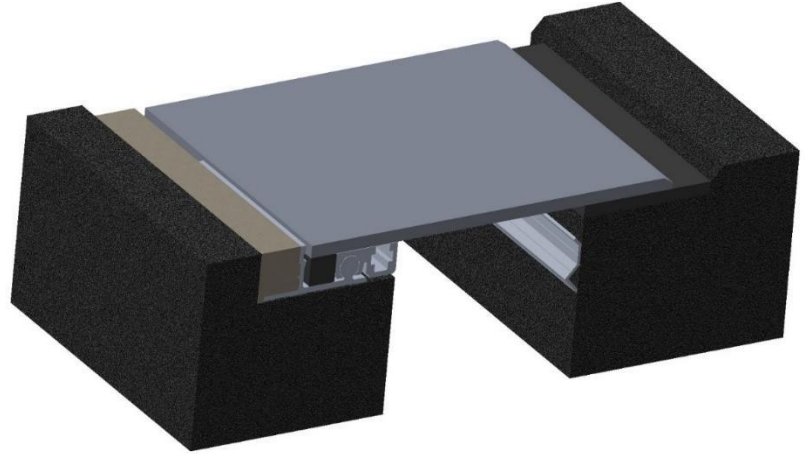
- Type 304 or 316 as per ASTM A666

#### Vapor Barrier

- Material – EPDM (Ehylene Propylene Diene Monomer).  
Color: Standard Black Colour

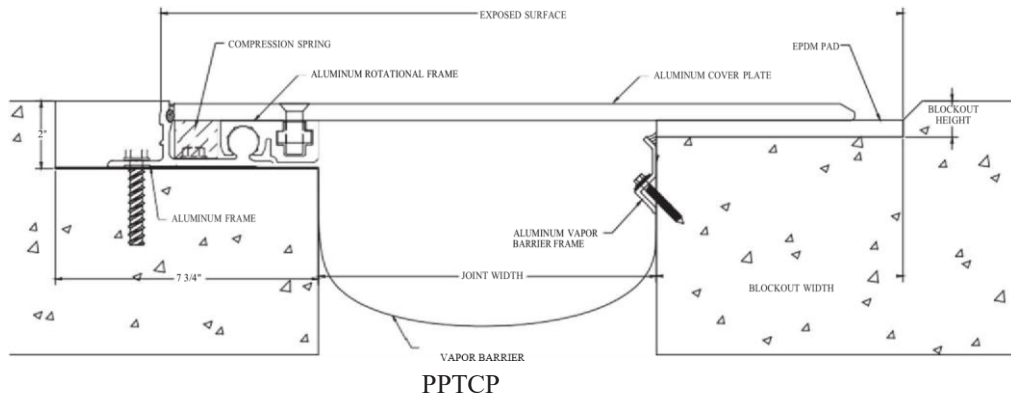
#### Standard Loading

- Vehicular loading (3,000 lb. point load per IBC 2009)



MODEL	JOINT WIDTH	MINIMUM OPENING	MAXIMUM OPENING	EXPOSED SURFACE	BLOCKOUT WIDTH	BLOCKOUT HEIGHT
PPTCP-600	152mm	16mm	241mm	397mm	127mm	27mm
PPTCP-800	203mm	16mm	318mm	473mm	152mm	27mm
PPTCP-1000	254mm	16mm	394mm	549mm	178mm	27mm
PPTCP-1200	305mm	16mm	470mm	668mm	203mm	27mm
PPTCP-1400	356mm	16mm	546mm	718mm	229mm	27mm
PPTCP-1600	406mm	16mm	622mm	946mm	254mm	27mm

# EXPANSION JOINTS COVER SYSTEMS



MODEL	JOINT WIDTH	MINIMUM OPENING	MAXIMUM OPENING	EXPOSED SURFACE	BLOCKOUT WIDTH	BLOCKOUT HEIGHT
PPTCPW-600	152mm	16mm	241mm	279mm	127mm	27mm
PPTCPW-800	203mm	16mm	318mm	356mm	152mm	27mm
PPTCPW-1000	254mm	16mm	394mm	432mm	178mm	27mm
PPTCPW-1200	305mm	16mm	470mm	521mm	203mm	27mm
PPTCPW-1400	356mm	16mm	546mm	571mm	229mm	27mm
PPTCPW-1600	406mm	16mm	622mm	710mm	254mm	27mm